



INTEGRITY, SERVICE,
INNOVATION AND RESPONSIBILITY

SHANDONG JIASHIDA NEW BUILDING MATERIALS CO., LTD

公司简介

Company Profile

山东嘉世达新型建材有限公司，深耕新型建材领域，始终以“诚信、服务、创新、担当”为核心导向，锚定“质量为根、服务为本”的发展基石，践行“简约高效、服务健康”的管理理念，通过服务的激励机制与持续的技术创新，不断拓宽发展边界，赋能企业高质量成长。

作为环保制造领域的标杆企业，公司深度依托济南市章丘区环境保护技术产业协会，积极助力环境保护制造业转型升级，着力推动产业向规模化、集约化、现代化方向迈进，搭建起联结大中小市场与各类企业的合作桥梁，实现资源整合、互利共赢。

在产品研发与生产方面，公司专注于金属雕刻板及新型隔热材料的研发、生产，引进世界先进的隔热装饰一体板生产技术，配备现代化生产设备，实行科学化管理体系。生产全过程严格遵循国际技术标准，精益求精，致力于为广大用户提供兼具高性能、高品质的建材产品与全方位的优质服务，助力绿色建筑与环保事业发展。



Shandong Jiashida New Building Materials Co., Ltd., deeply engaged in the field of new building materials, always takes "Integrity, Service, Innovation and Responsibility" as its core orientation, takes "Quality as the Root and Service as the Foundation" as its development cornerstone, and practices the management philosophy of "Simplicity, Efficiency, Service and Health". Through a service-oriented incentive mechanism and continuous technological innovation, the company constantly expands its development boundaries and promotes the high-quality growth of the enterprise.

As a benchmark enterprise in the field of environmental protection manufacturing, the company relies closely on the Zhangqiu District Environmental Protection Technology Industry Association of Jinan City, actively promotes the transformation and upgrading of the environmental protection manufacturing industry, focuses on driving the industry towards scale, intensification and modernization, and builds a cooperative bridge connecting large, medium and small markets as well as various enterprises to achieve resource integration and mutual benefit.

In terms of product R&D and production, the company focuses on the R&D and production of metal carved panels and new thermal insulation materials, introduces the world's advanced production technology for integrated thermal insulation and decoration panels, is equipped with modern production equipment, and implements a scientific management system. The entire production process strictly complies with international technical standards and pursues excellence, committed to providing customers with high-performance, high-quality building materials and comprehensive, high-quality services, and contributing to the development of green buildings and environmental protection.

Metal Carved Board

Green Technology

PRODUCT DESCRIPTION



Metal carving boards are made of environmentally friendly materials (inner polyurethane layer is the same material as refrigerator and air conditioning insulation layer). They are non-toxic, odorless and pollution-free. They provide green protection and decoration for buildings. The surface is a high quality color relief veneer metal plate with special layer treatment, the middle layer is a rigid high density polyurethane foam thermal insulation layer with flame retardant treatment, and the bottom layer is an aluminium foil protective layer with thermal insulation, thermal insulation and moisture-proof function. Because the wallboard itself has the characteristics of thermal insulation, waterproof and flame retardant, light anti-seismic, convenient construction, sound insulation and noise reduction, green environmental protection, beautiful and durable, and because of its simple and practical plate assembly method, not limited by seasonal environment, so the installation and use is very safe and convenient, suitable for all seasons. This innovative exterior wall thermal insulation decoration board highlights its advantages.

This material has decoration and heat preservation function. By embossing and baking aluminized zinc plate, it can form more than 100 kinds of art decoration effects, such as red wood grain, brick grain, bark grain, cultural stone, marble, mosaic, etc. Metal carving board effectively solves the problem of single function of traditional material and synchronizes the decoration of external wall with heat insulation. In summer, the indoor temperature is 3-5 degrees lower than that of ordinary buildings, and it only takes about 5-8 years for the houses decorated with metal carved boards to recover the cost of materials in terms of air conditioning and cooling.

PRODUCT FEATURES



Thermal insulation, consumption reduction and energy saving

Compared with traditional exterior wall panels, metal carved panels have better heat preservation and heat insulation functions.



Convenient installation

The installation method of metal carving board is simple, not affected by the season and weather.



Implement energy saving and environmental protection concepts

The metal carved board has stable chemical and physical structure, no pollution, and long service life.



Sound insulation and noise reduction, quiet and comfortable

The metal carved board is a closed bubble structure, which has a significant sound insulation effect.



Waterproof and moisture-proof performance is stable

The metal carved board is processed by special process, with good waterproof performance and high material stability.



Light texture and obvious shockproof effect

The metal carved board has been treated with a special process and has strong shock and crack resistance characteristics.



Flame retardant properties

The core material has been specially treated to have good fire and flame retardant properties.



Many patterns and colorful

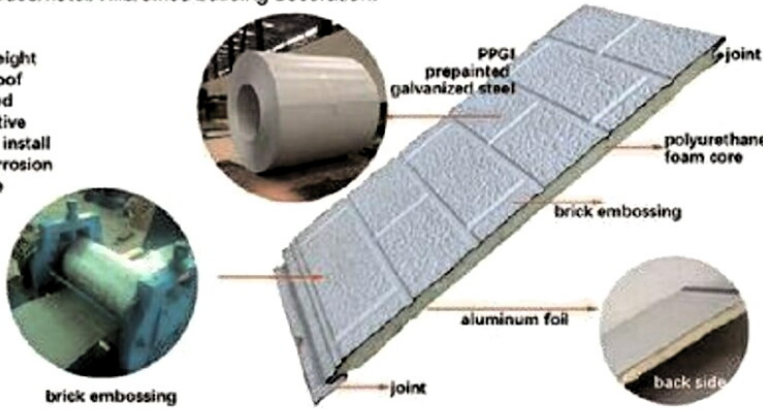
There are many kinds of metal carving boards, you can choose from more than 100 different carving patterns and background colors.

外墙聚氨酯发泡保温装饰板 EXTERIOR METAL PU FOAM DECORATIVE PANEL

Product introduction

Exterior Metal PU Foam Wall Panel is a new design Sandwich panel, the Surface is prepainted galvanized steel sheet(thickness 0.25-0.4mm), the core material is hard Polyurethane foam, and the back is aluminum foil, it is widely used in house/hotel/Villa/office building decoration.

- a. light weight
- b. fire-proof
- c. insulated
- d. decorative
- e. easy to install
- f. anti-corrosion
- g. durable



Specification

Exterior Metal Pu foam Decorative panel		
Products Parameter	Thickness	16mm
	Standard Size	3800/5800*383*16mm
	Surface Coating	0.25-0.4mm thickness engraving color coating galvanized steel sheet
	Core Material	Polyurethane Foam
	Panel Weight	3.25-3.7kg/m ²
	Bottom Material	Aluminum foil
Physical Parameter	Life Span	25-30 years
	Fire Protection Grade	B1 grade
	Waterproof Rate	0.08%
Package	Export carton package	3332 m ² for 40 HQ (150 cartons)
	10 pcs/carton	1444 m ² for 20 GP (65 cartons)
Application	Hotel,market,sport hall,Villa,Prefab house,office building, farm house,etc	
Outstanding Performance	Easy-install,Thermal insulation,Fireproof,soundproof,moisture proof,ECO-friendly,High-strength,lightweight, Easy to clean	

Product pictures



■ 表面材料结构示意图

SCHEMATIC DIAGRAM OF SURFACE MATERIAL STRUCTURE

(1) 硅丙烯表面处理 SILICON PROPYLENE SURFACE TREATMENT

(2) 丙烯酸乳胶喷涂 ACRYLIC LATEX SPRAYING

(3) 精涂层 (正面漆) FINE COATING (FRONT PAINT)

(4) 初涂层 (底漆) INITIAL COATING (PRIMER)

(5) 化学处理层 CHEMICAL TREATMENT LAYER

(6) 镀铝锌层 ALUMINUM ZINC COATING

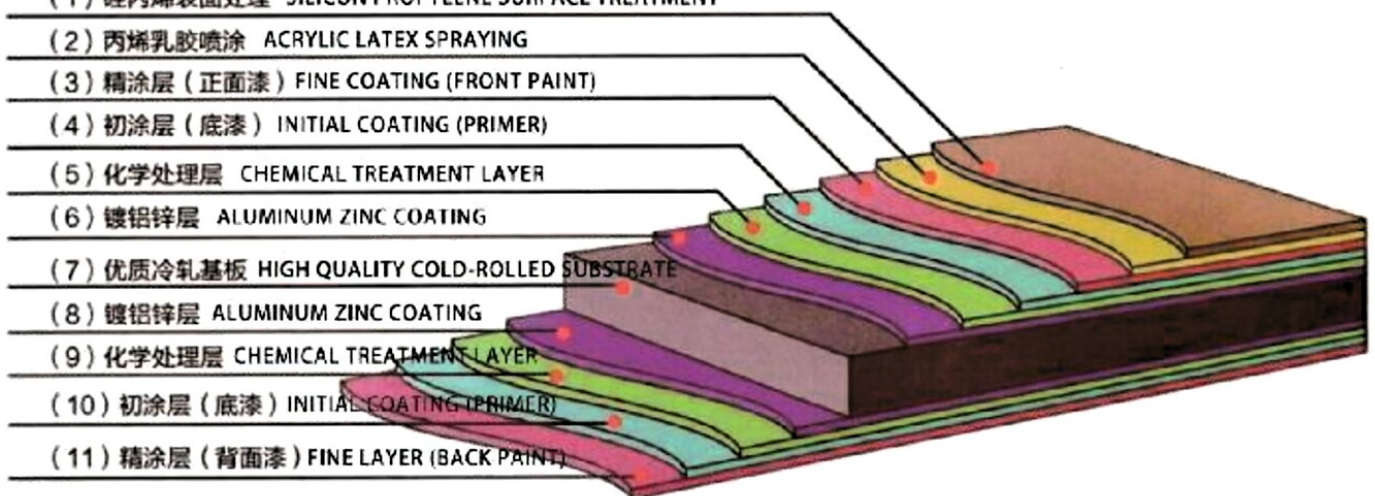
(7) 优质冷轧基板 HIGH QUALITY COLD-ROLLED SUBSTRATE

(8) 镀铝锌层 ALUMINUM ZINC COATING

(9) 化学处理层 CHEMICAL TREATMENT LAYER

(10) 初涂层 (底漆) INITIAL COATING (PRIMER)

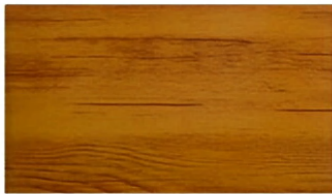
(11) 精涂层 (背面漆) FINE LAYER (BACK PAINT)



HOT



M-001



M-002



M-003



M-004



M-005



M-006



CCB-001



CCB-002



CCB-003



CCB-004



CCB-005



CCB-006



CCB-007



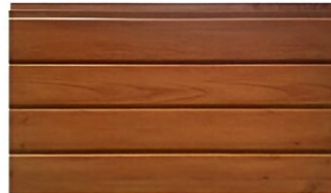
CCB-008



CCB-009



SZG-001



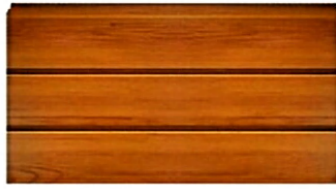
SZG-002



SZG-003



LG-001



LG-002



LG-003



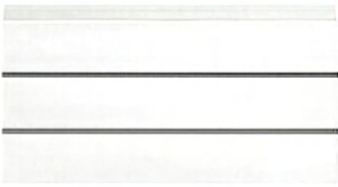
LG-004



LG-005



LG-006



LG-007



LG-008



LG-009



LG-010



LG-011



LG-012



LG-013



LG-014



LG-015



DZG-001



DZG-002



DZG-003



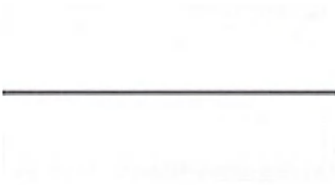
DZG-004



DZG-005



DZG-006



DZG-007



DZG-008



DZG-009



DZG-010



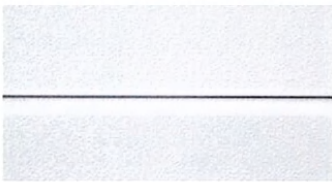
DZG-011



DZG-012



DZG-013



DZG-014

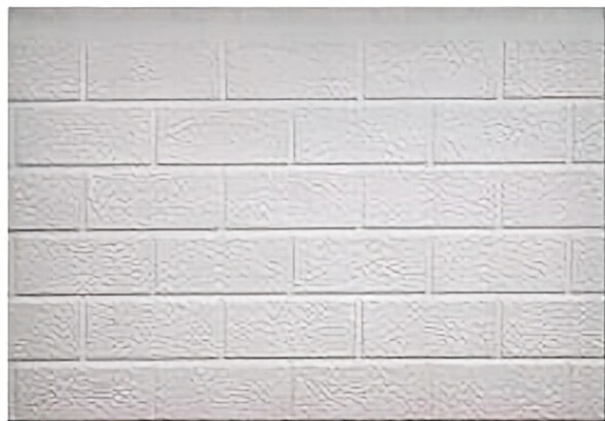


DZG-015

BRICK PATTERN

6标砖

6 Standard brick



DLB-0001天使白6砖
DLB-0001Angel White 6 Bricks



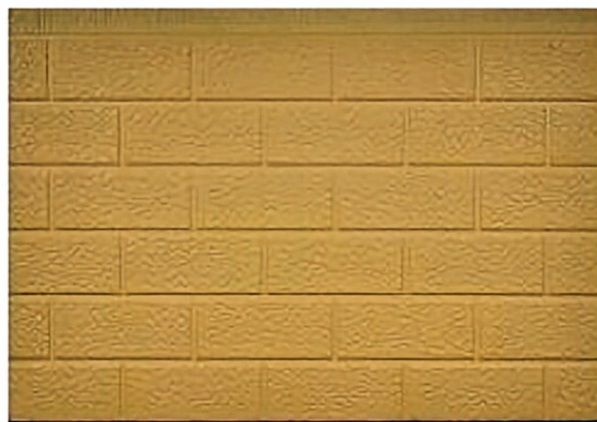
DLB-0004古墙灰6砖
DLB-0004Ancient wall gray 6 bricks



DLB-0005浅灰6砖
DLB-0005Light gray 6 bricks



DLB-0006深灰6砖
DLB-0006Dark gray 6 bricks

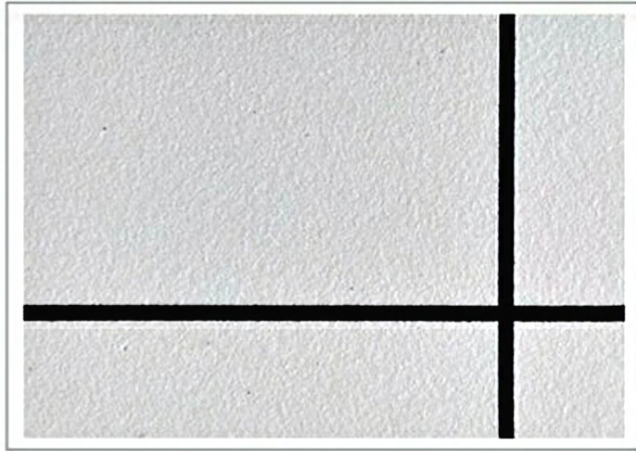


DLB-0010沙漠黄6砖
DLB-0010Desert Yellow 6 bricks

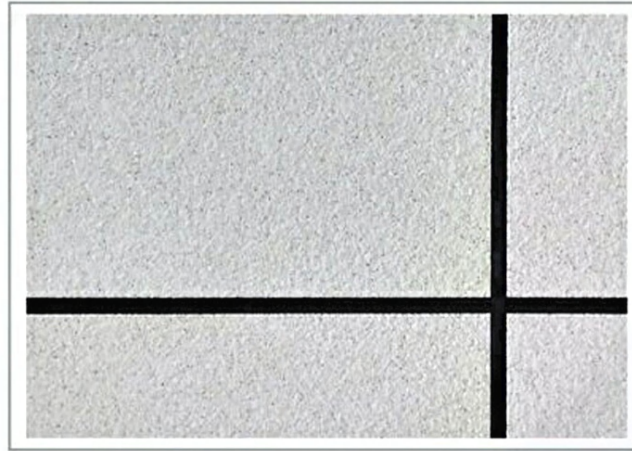


DLB-0025浅棕砂6砖
DLB-00256 bricks of light brown sand

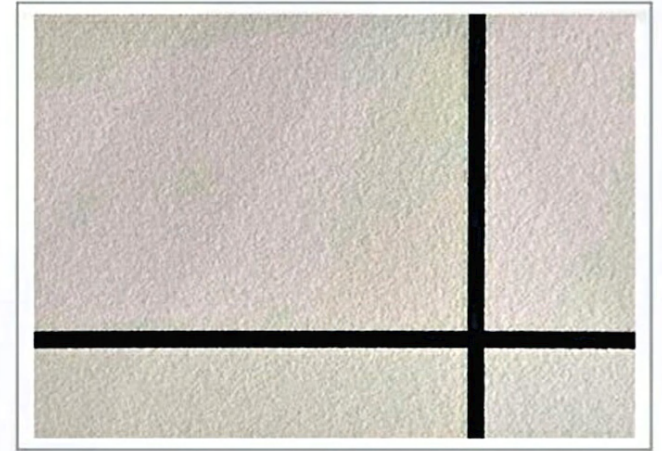
■ Color Stone-Coated Series



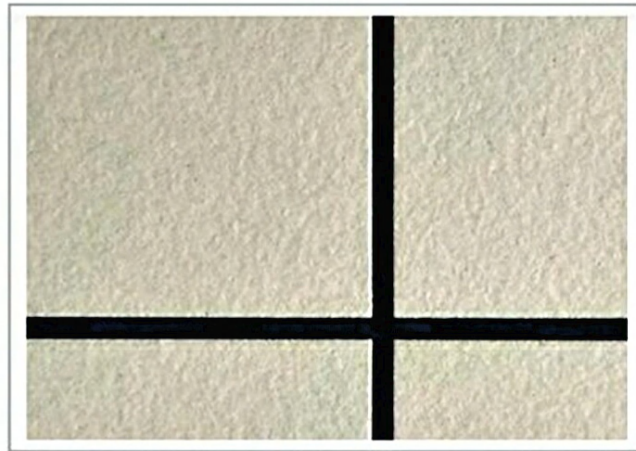
CSC-01



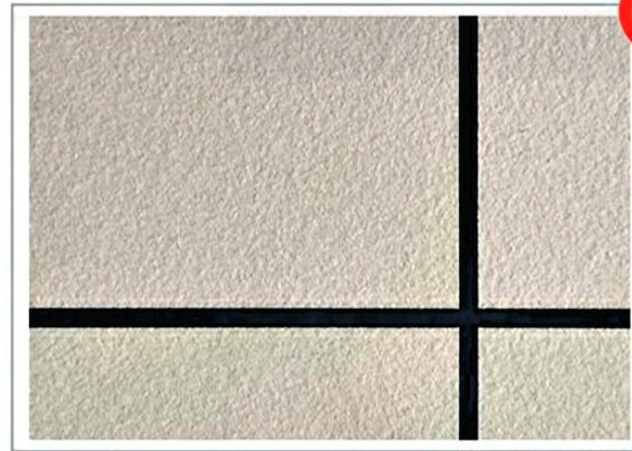
CSC-02



CSC-03



CSC-04

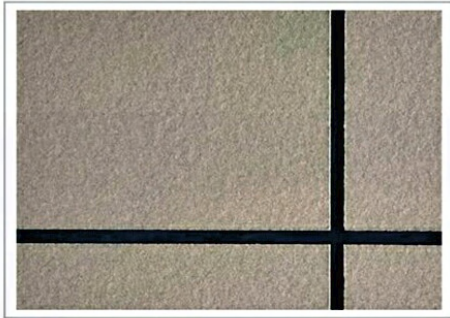


CSC-05

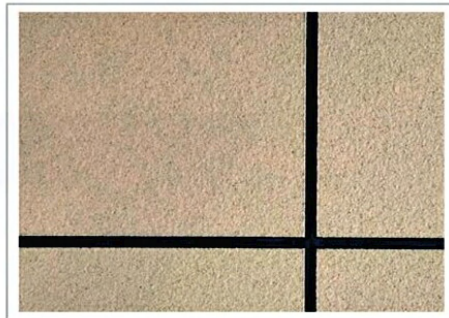


CSC-06

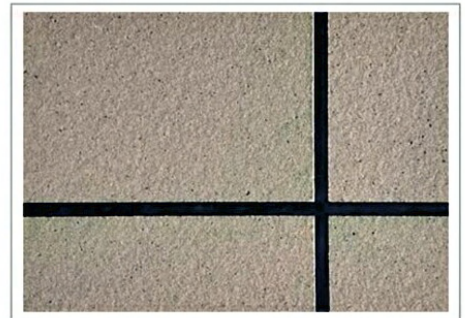
■ Color Stone-Coated Series



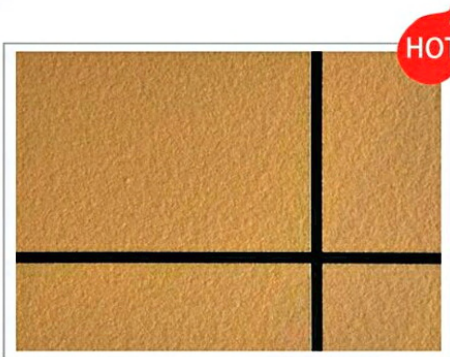
CSC-07



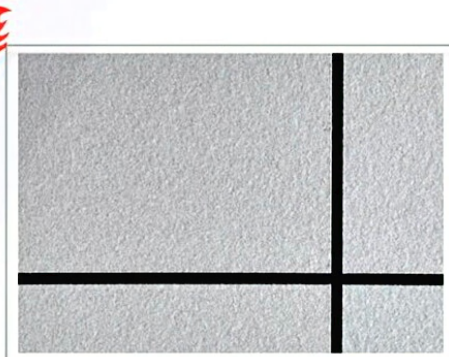
CSC-08



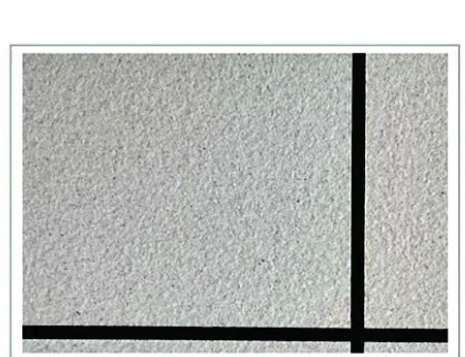
CSC-09



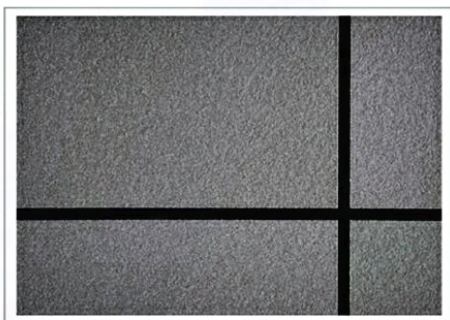
CSC-10



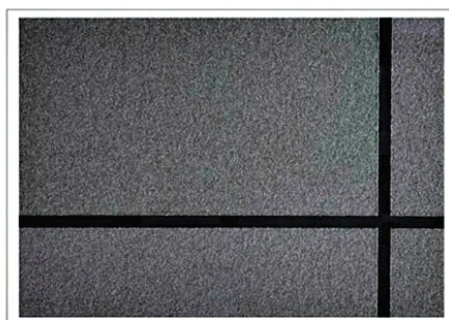
CSC-11



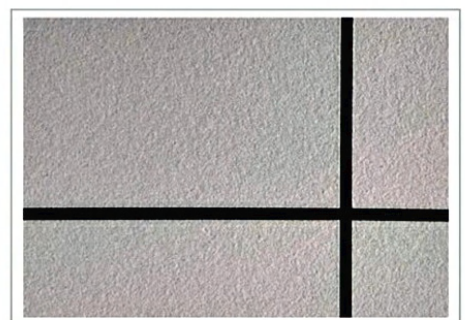
CSC-12



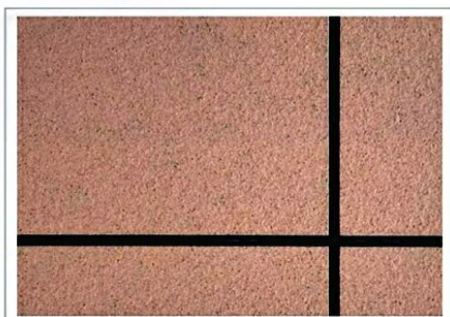
CSC-13



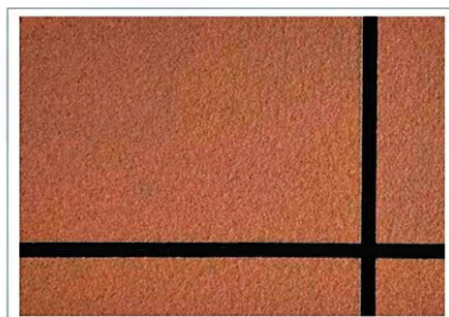
CSC-14



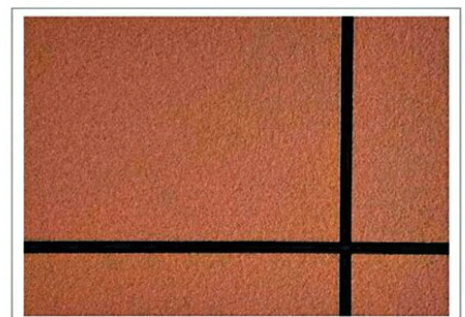
CSC-15



CSC-16



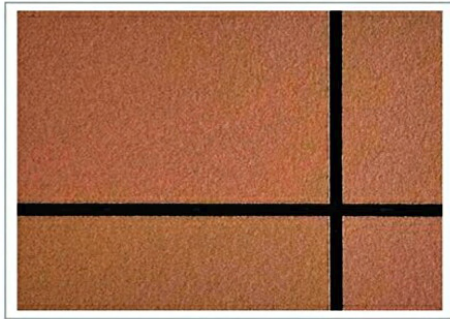
CSC-17



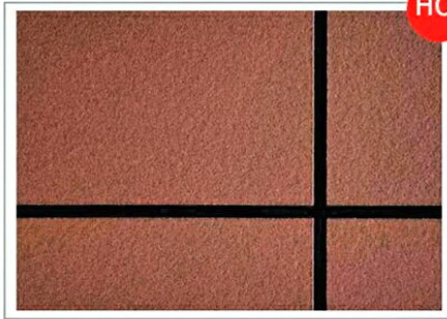
CSC-18

Patterns&Designs

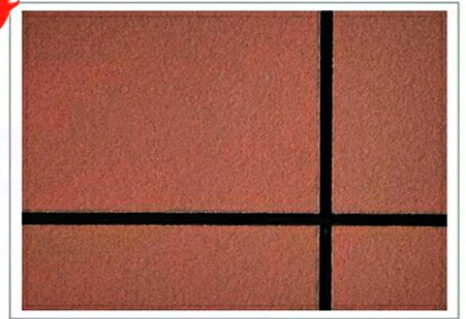
■ Color Stone-Coated Series



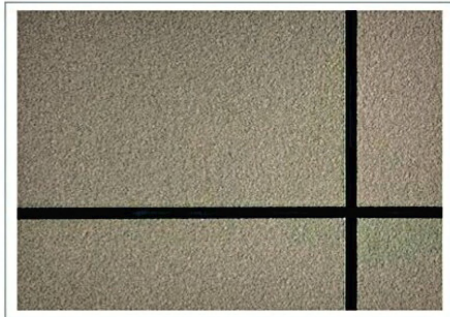
CSC-19



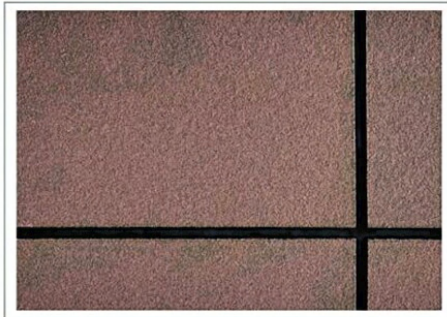
CSC-20



CSC-21



CSC-22



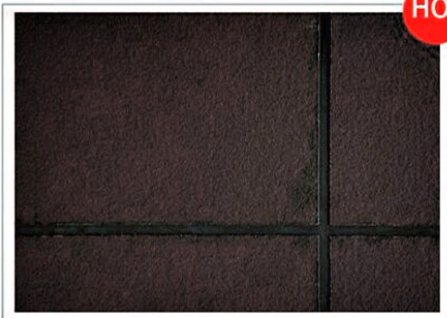
CSC-23



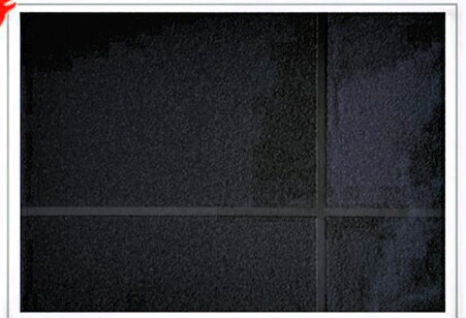
CSC-24



CSC-25



CSC-26



CSC-27

6标砖

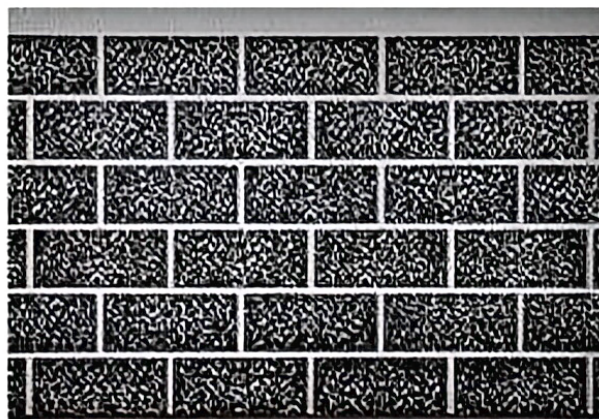
6 Standard brick

专注金属雕花板生产与研发

Focusing on the production and research and development of metal carved boards



DLB-0026深咖6砖
DLB-0026Deep coffee 6 bricks



DLBG-TG天使白辊古墙灰6砖
DLBG-TG Angel White Roller Ancient Grey Wall 6 Bricks



DLBG-TH天使白辊网纹红6砖
DLBG-TH Angel white roller mesh red 6 bricks



DLBG-TW天使白辊瓦红6砖
DLBG-TW Angel white roller tile red 6 bricks



DLBG-TS天使白辊深灰6砖
DLBG-TS Angel White Roller Deep Grey 6 Bricks



DLBG-TT天使白辊土黄6砖
DLBG-TT Angel white roller soil yellow 6 bricks



DLB-0018网纹红6砖
DLB-0018 Wang Wenhong 6 bricks



DLC-0006深灰6粗砖
DLC-0006 Dark gray 6 coarse brick



DLC-0009米黄6粗砖
DLC-0009 Beige 6 coarse brick



DLC-0011微紫黄6粗砖
DLC-0011 Micro purple yellow 6 thick brick



DLC-0018网纹红6粗砖
DLC-0018 Mesh Red 6 Coarse Brick



DLC-0004古墙灰6粗砖
DLC-0004 Ancient wall gray 6 coarse bricks



DLC-0022深绿6粗砖

DLC-0022 Dark green 6 thick brick



DLC-0025浅棕砂6粗砖

DLC-0025 Light brown sand 6 coarse bricks



DLCG-GH古墙灰辊纯白6粗砖

DLCG-GH Ancient wall gray roller pure white 6-thick brick



DLCG-GH古墙灰辊灰白6粗砖

Ancient wall gray roller gray white 6 coarse bricks



DLCG-QW浅棕砂辊瓦红6粗砖

DLCG-QW light brown sand roller tile red 6 coarse brick



DBZ-0001天使白标砖

DBZ-0001 Angel White Label Brick



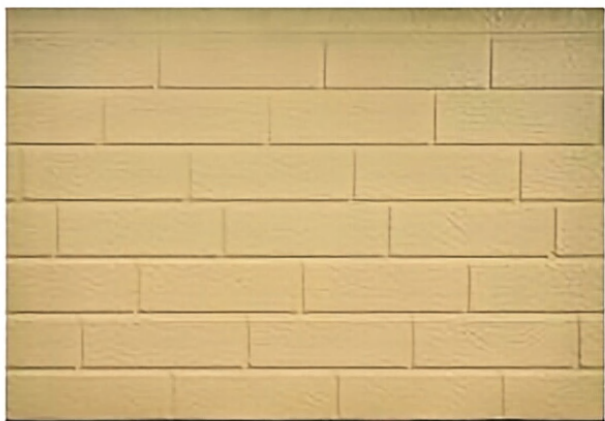
DBZ-0004古墙灰标砖
DBZ-0004 Ancient Wall Gray Label Brick



DBZ-0005浅灰标砖
DBZ-0005 light grey standard brick



DBZ-0006深灰标砖
DBZ-0006 Dark Grey Standard Brick



DBZ-0009米黄标砖
DBZ-0009 Yellow Label Brick



DBZ-0002亮白标砖
DBZ-0002 Bright White Label Brick



DBZ-0003乳白标砖
DBZ-0003 Milk White Label Brick

标砖

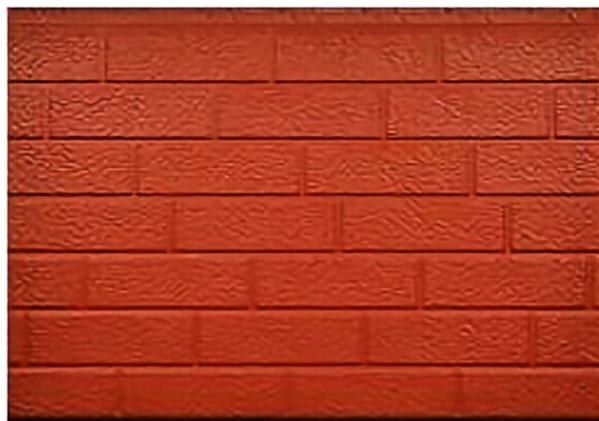
Standard brick

专注金属雕花板生产与研发



DBZ-0016亮红标砖

DBZ-0016 bright red standard brick



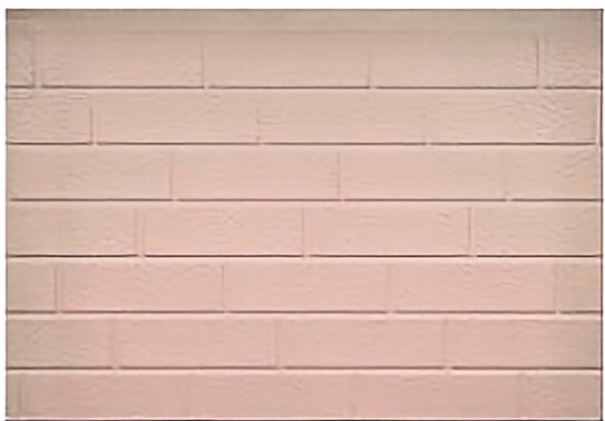
DBZ-0017砖红标砖

DBZ-0017 brick red standard brick



DBZ-0010沙漠黄标砖

DBZ-0010 desert yellow standard brick



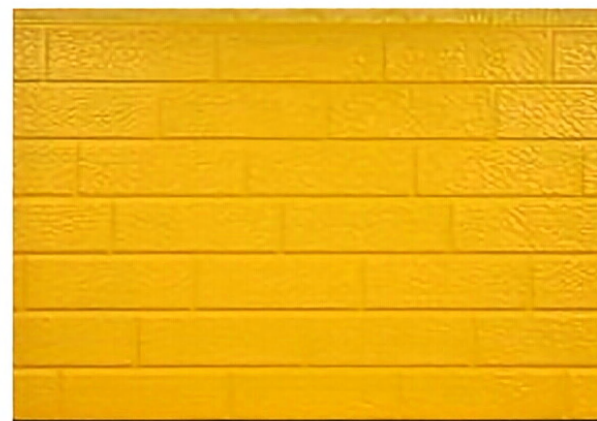
DBZ-0011微紫黄标砖

DBZ-0011 purple yellow standard brick



DBZ-0012浅米黄标砖

DBZ-0012 light beige standard brick



DBZ-0014亮黄标砖

DBZ-0014 bright yellow standard brick



DBZ-0019红橙标砖

DBZ-0019 red orange standard brick



DBZ-0023警蓝标砖

DBZ-0023 police blue standard brick



DBZ-0025浅棕砂标砖

DBZ-0025 light brown sand standard brick



DBZG-T天使白辊网纹红标砖

DBZG-T Angel White Roller Reticulated Red Label Brick



DBZG-GW古墙灰辊瓦红标砖

DBZG-GW Ancient Wall Grey Roller Tile Red Label Brick



DBZG-GJ古墙灰辊桔红标砖

DBZG-GJ Ancient Wall Grey Roller Orange Label Brick

标砖

Standard brick

专注金属雕花板生产与研发



DBZG-SH深灰辊灰白标砖

DBZG-SH dark gray roller gray white standard brick



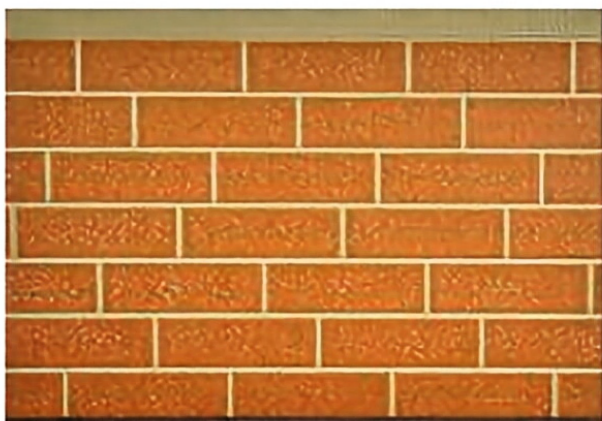
DBZG-SW沙漠黄辊网纹红标砖

DBZG-SW desert yellow roller reticulated red standard brick



DBZG-MJ米黄辊桔红标砖

DBZG-MJ beige roller orange standard brick



DBZG-MT米黄辊土黄标砖

DBZG-MT Beige Roller Yellow Label Brick



DBZG-QG浅灰辊古墙灰标砖

DBZG-QG Light Grey Roller Ancient Wall Grey Label Brick



DBZG-SB深灰辊纯白标砖

DBZG-SB Dark Grey Roller Pure White Label Brick



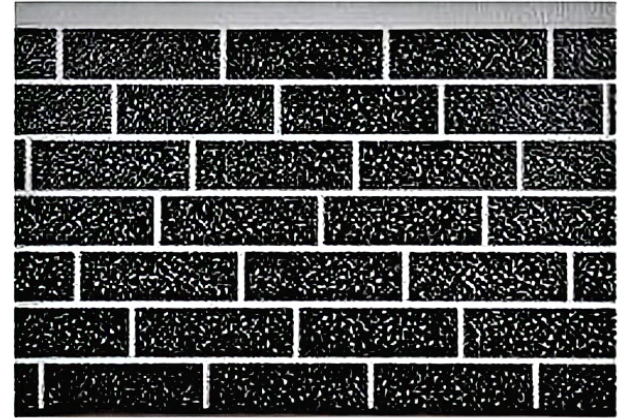
DBZG-SW深灰辊瓦红标砖

DBZG-SW dark gray roller tile red standard brick



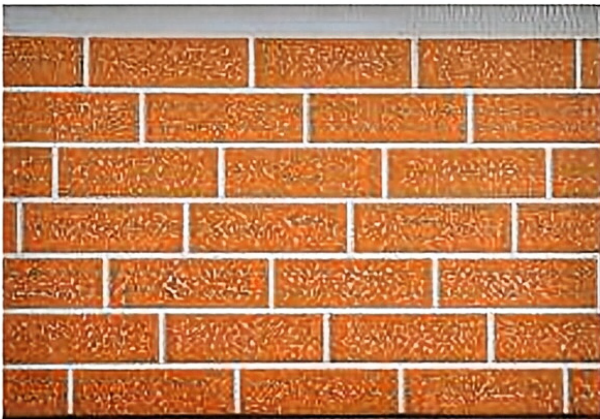
DBZG-TG天使白辊古墙灰标砖

DBZG-TG angel white roller ancient wall gray standard brick



DBZG-TS天使白辊深灰标砖

DBZG-TS angel white roller dark gray standard brick



DBZG-TT天使白辊土黄标砖

DBZG-TT Angel White Roller Yellow Label Brick



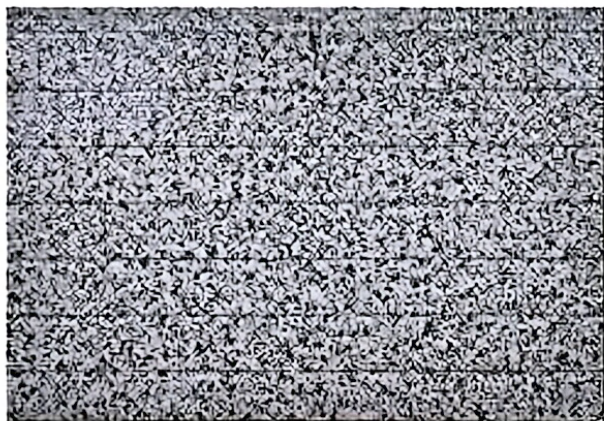
DBZG-TW天使白辊瓦红标砖

DBZG-TW Angel White Roller Tile Red Label Brick



DLBG-TJ天使白辊桔红标砖

DLBG-TJ Angel White Roller Orange Label Brick



DDLZ-0033芝麻纹标砖

DDLZ-0033 sesame grain standard brick



DCZ-0006深灰粗砖

DCZ-0006 dark gray coarse brick



DCZ-0009米黄粗砖

DCZ-0009 beige coarse brick



DCZ-0010沙漠黄粗砖

DCZ-0010 desert yellow coarse brick



DCZ-0001天使白粗砖

DCZ-0001 angel white coarse brick



DCZ-0004古墙灰粗砖

DCZ-0004 ancient wall gray coarse brick



DCZ-0011微紫黄粗砖

DCZ-0011 purple yellow thick brick



DCZ-0017砖红粗砖

DCZ-0017 brick red thick brick



DCZ-0018网纹红粗砖

DCZ-0018 reticulated red thick brick



DCZG-GJ古墙灰辊桔红粗砖

DCZG-GJ Ancient Wall Grey Roller Orange Coarse Brick



DCZG-MJ米黄辊桔红粗砖

DCZG-MJ Beige Roller Orange Coarse Brick



DCZG-TG天使白辊古墙灰粗砖

DCZG-TG Angel White Roller Ancient Wall Grey Coarse Brick

粗砖

Rough brick

专注金属雕花板生产与研发



DCZG-TH天使白辊网纹红粗砖

DCZG-TH Angel White Roller Reticulated Red Coarse Brick



DCZG-TS天使白辊深灰粗砖

DCZG-TS Angel White Roller Dark Grey Coarse Brick



DCZG-TT天使白辊土黄粗砖

DCZG-TT Angel White Roller Native Yellow Coarse Brick



DCZG-TW天使白辊瓦红粗砖

DCZG-TW Angel White Roller Tile Red Coarse Brick



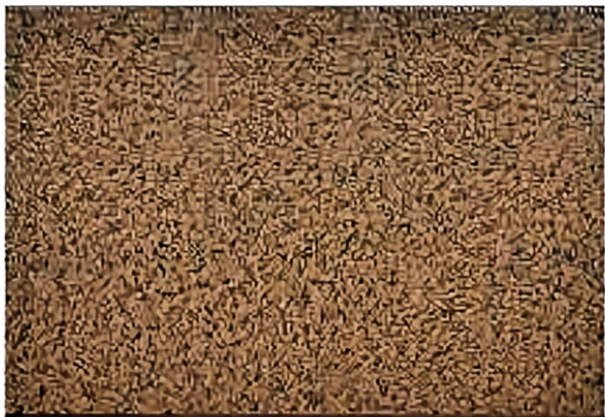
DCZG-WF微紫黄辊浅粉粗砖

DCZG-WF Slightly Purple Yellow Roller Light Powder Coarse Brick



DCZ-0005浅灰粗砖

DCZ-0005 Light Grey Coarse Brick



DDL-0036黄花石平板
DDL-0036 yellow flower stone slab



DDL-0037石墙纹平板
DDL-0037 stone wall pattern slab



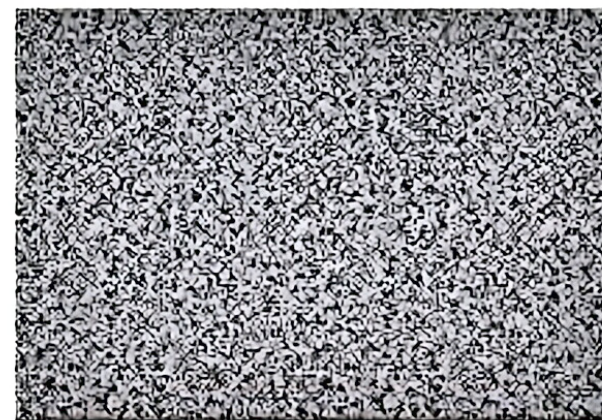
DDL-0039竖文化石平板
DDL-0039 vertical culture stone slab



DDL-0040红文化石平板
DDL-0040 red culture stone plate



DDL-0041闪电纹平板
DDL-0041 lightning pattern plate



DDL-0033芝麻纹平板
DDL-0033 sesame pattern plate



DDLT-0040红文化石弹涂纹平板
DDLT-0040 Red Culture Stone Spine-coated Flat Plate



DDL-0042和田玉平板
DDL-0042 Hetian Jade Flat Plate



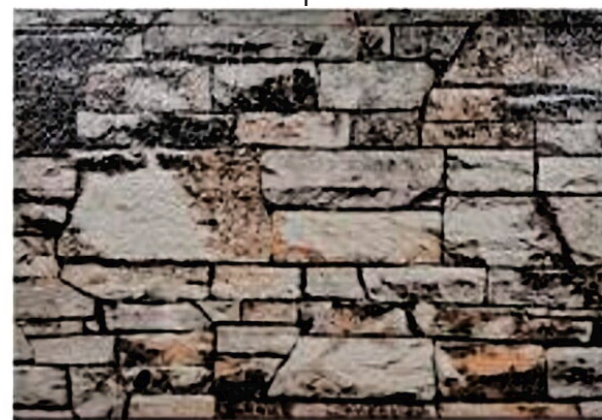
DDLT-0033芝麻纹弹涂纹平板
DDLT-0033 Sesame Spine-coated Flat Plate



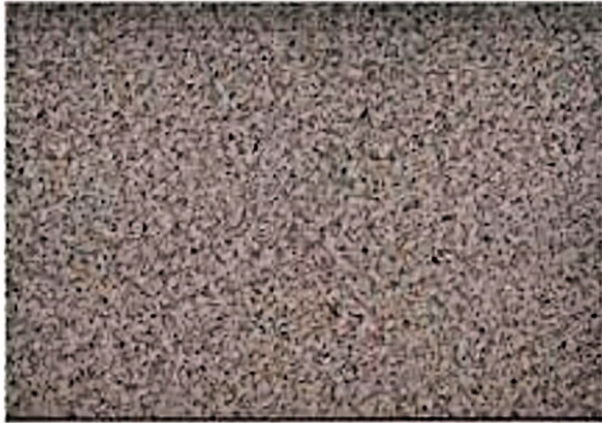
DDLT-0034水磨纹弹涂纹平板
DDLT-0034 water grinding pattern spring-coated plate



DDLT-0035玫瑰红弹涂纹平板
DDLT-0035 rose red spring-coated plate



DDLT-0039竖文化石弹涂纹平板
DDLT-0039 vertical culture stone spring-coated plate



DDL-0034水磨纹大理石平板
DDL-0034 Water Milled Marble Slab



DDB-0004古墙灰大石板
DDB-0004 Ancient Wall Grey Slab



DDB-0001天使白大石板
DDB-0001 Angel White Slab



DTT-0001天使白弹涂纹平板
DTT-0001 angel white stretch pattern plate



DTT-0002亮白弹涂纹平板
DTT-0002 bright white stretch pattern plate



DTT-0003乳白弹涂纹平板
DTT-0003 milky white stretch pattern plate

弹涂纹

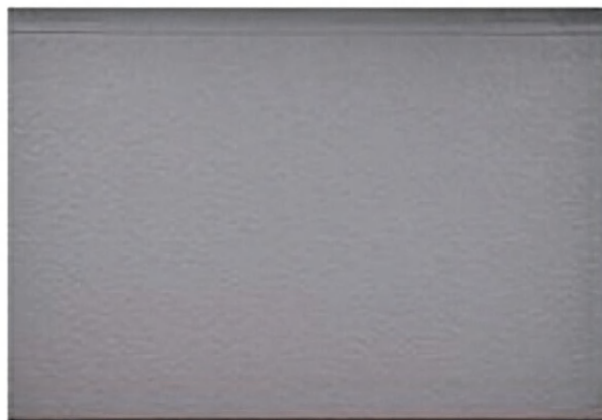
The mud wall pattern

专注金属雕花板生产与研发



DTT-0004古墙灰弹涂纹平板

DTT-0004 Ancient Wall Grey Slab



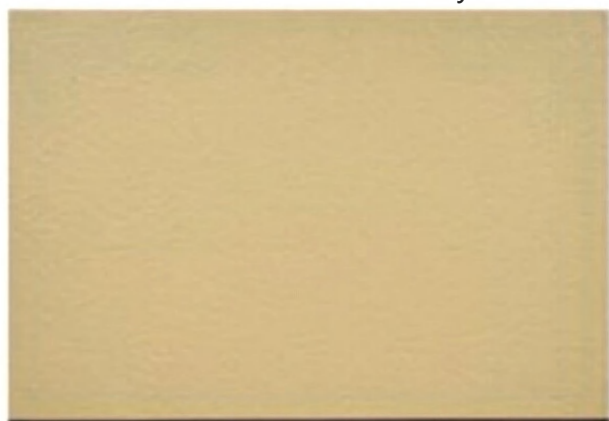
DTT-0005浅灰弹涂纹平板

DTT-0005 Light Grey Slab



DTT-0007亮白灰弹涂纹平板

DTT-0007 Bright White Slab



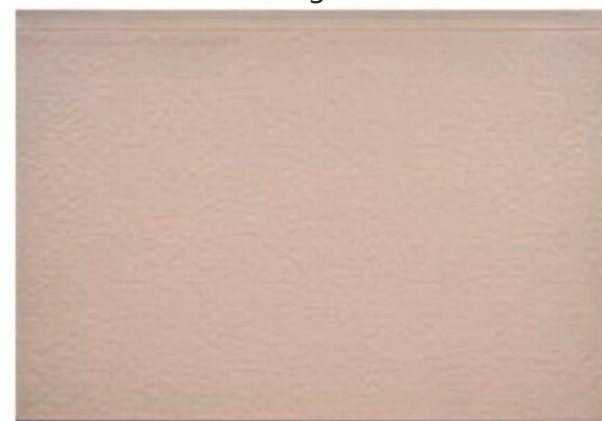
DTT-0009米黄弹涂纹平板

DTT-0009 beige-coated plate



DTT-0010沙漠黄弹涂纹平板

DTT-0010 desert yellow-coated plate



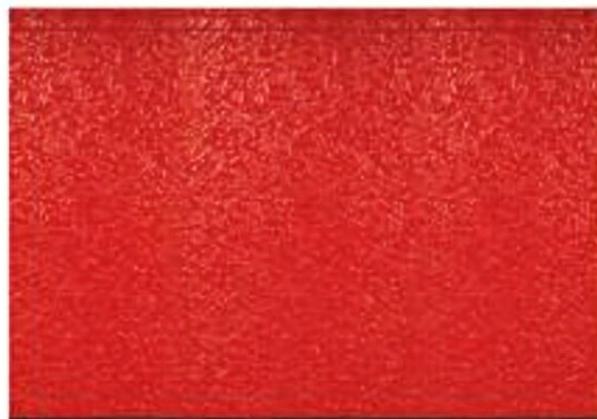
DTT-0011微紫黄弹涂纹平板

DTT-0011 purple-yellow-coated plate



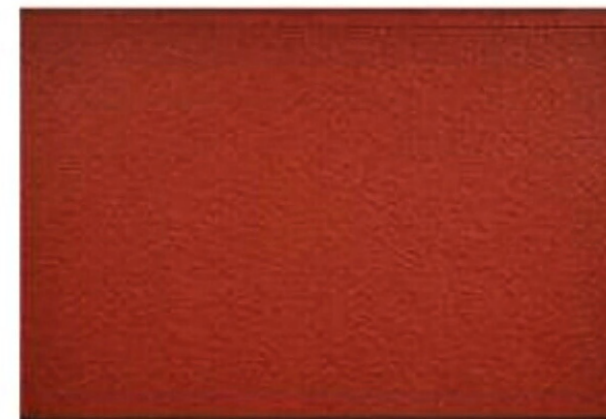
DTT-0015黄绿弹涂纹平板

DTT-0015 yellow green stretch pattern plate



DTT-0016亮红弹涂纹平板

DTT-0016 bright red stretch pattern plate



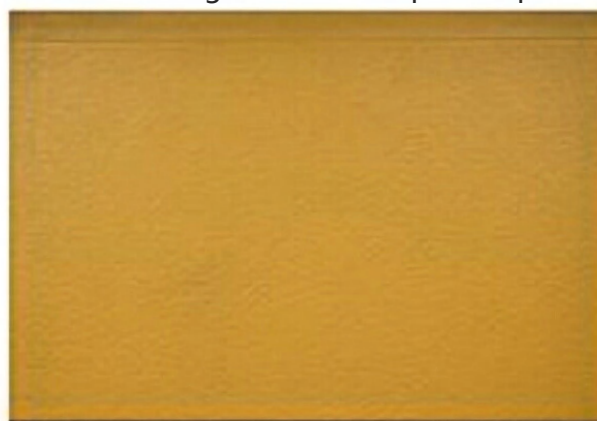
DTT-0018网纹红弹涂纹平板

DTT-0018 reticulated red stretch pattern plate



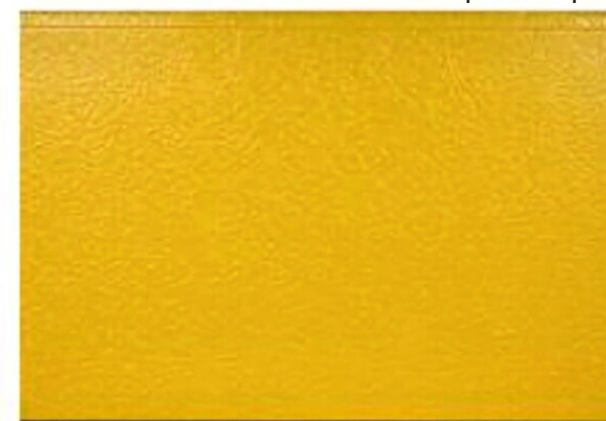
DTT-0012浅米黄弹涂纹平板

DTT-0012 Light Beige Ellipse Plate



DTT-0013砂面黄弹涂纹平板

DTT-0013 Sand Face Yellow Ellipse Plate



DTT-0014亮黄弹涂纹平板

DTT-0014 Bright Yellow Ellipse Plate

弹涂纹

The mud wall pattern

专注金属雕花板生产与研发



DTT-0020粉色弹涂纹平板
DTT-0020 Pink Spinel Plate



DTT-0021苹果绿弹涂纹平板
DTT-0021 Apple Green Spinel Plate



DTT-0022深绿弹涂纹平板
DTT-0022 Dark Green Spinel Plate



DTT-0023警蓝弹涂纹平板
DTT-0023 Alert Blue Spine-coated Plate



DTT-0025浅棕砂弹涂纹平板
DTT-0025 Light Brown Sand Spine-coated Plate



DTT-0032闪银弹涂纹平板
DTT-0032 Flash Silver Spine-coated Plate

弹涂纹

The mud wall pattern



DTTX-1010沙漠黄弹涂纹斜沟

DTTX-1010 desert yellow stretch-coated diagonal groove



DTTX-1011微紫黄弹涂纹斜沟

DTTX-1011 purple yellow stretch-coated diagonal groove



DTTX-1023警蓝弹涂纹斜沟

DTTX-1023 police blue stretch-coated diagonal groove



DTTX-2009米黄弹涂纹双斜沟

DTTX-2009 Beige Slipper Double Oblique Groove



DTTZ-1001天使白弹涂纹中沟

DTTZ-1001 Angel White Slipper Middle Groove



DTTX-1002天使白弹涂纹斜沟

DTTX-1002 Angel White Slipper Diagonal Groove

弹涂纹

The mud wall pattern

专注金属雕花板生产与研发



DTTZ-1002亮白弹涂纹中沟

DTTZ - 1002 Bright White Spatter Finish Middle Groove



DTTZ-1004古墙灰弹涂纹中沟

DTTZ - 1004 Ancient Wall Grey Spatter Finish Middle Groove



DTTZ-1005浅灰弹涂纹中沟

DTTZ - 1005 Light Grey Spatter Finish Middle Groove



DTTZ-1007亮白灰弹涂纹中沟

DTTZ - 1007 Bright White Grey Spatter Finish Middle Groove



DTTZ-1009米黄弹涂纹中沟

DTTZ - 1009 Cream Spatter Finish Middle Groove

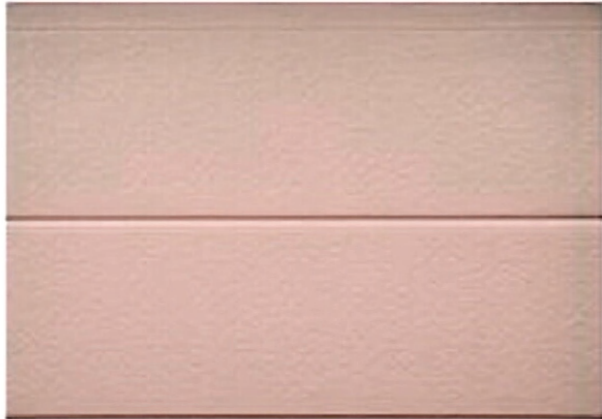


DTTZ-1010沙漠黄弹涂纹中沟

DTTZ - 1010 Desert Yellow Spatter Finish Middle Groove

弹涂纹

The mud wall pattern



DTTZ-1011微紫黄弹涂纹中沟

DTTZ - 1011 Micro-Violet Yellow Spray - Pattern Middle Groove



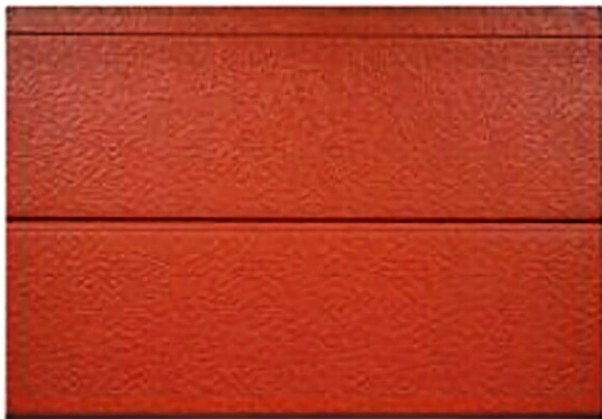
DTTZ-1012浅米黄弹涂纹中沟

DTTZ - 1012 Light Beige Spray - Pattern Middle Groove



DTTZ-1014亮黄弹涂纹中沟

DTTZ - 1014 Bright Yellow Spray - Pattern Middle Groove



DTTZ-1017砖红弹涂纹中沟

DTTZ - 1017 Brick Red Spray - Pattern Middle Groove



DTTZ-1023警蓝弹涂纹中沟

DTTZ - 1023 Police Blue Spray - Pattern Middle Groove



DTTZ-1025浅棕砂弹涂纹中沟

DTTZ - 1025 Light Brown Sand Spray - Pattern Middle Groove



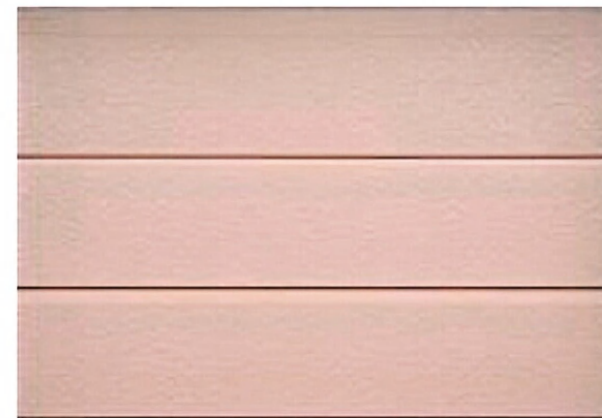
DTTZ-2004古墙灰弹涂纹双中沟

DTTZ-2004 ancient wall ash-coated double-midway groove



DTTZ-2005浅灰弹涂纹双中沟

DTTZ-2005 light ash-coated double-midway groove



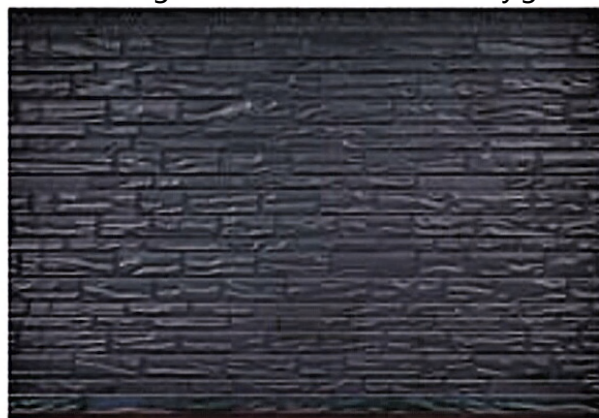
DTTZ-2011微紫黄弹涂纹双中沟

DTTZ-2011 slightly purple-yellow-coated double-midway groove



DTTZ-2012浅米黄弹涂纹双中沟

DTTZ-2012 light beige elastic pattern double middle ditch



DDS-0004古墙灰叠石纹

DDS-0004 ancient wall gray superimposed stone pattern



DDS-0009米黄叠石纹

DDS-0009 beige superimposed stone pattern



DDS-0010沙漠黄叠石纹

DDS-0010 Desert Yellow Stack Stone Pattern



DKZ-0001天使白宽窄砖

DKZ-0001 Angel White Wide Narrow Brick



DKZ-0004古墙灰宽窄砖

DKZ-0004 Ancient Wall Grey Wide Narrow Brick



DKZ-0005浅灰宽窄砖

DKZ-0005 light gray wide and narrow brick



DKZ-0007亮白灰宽窄砖

DKZ-0007 bright white gray wide and narrow brick



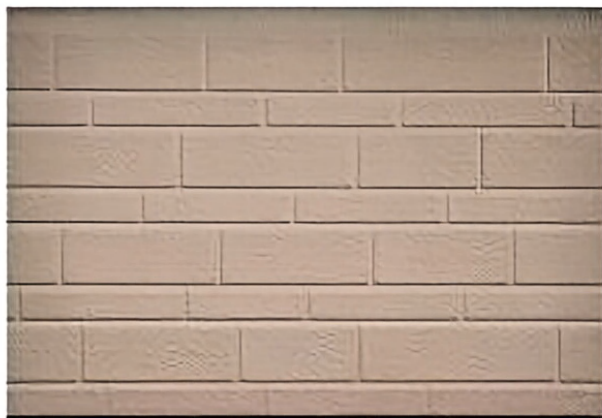
DKZ-0007米黄宽窄砖

DKZ-0007 beige wide and narrow brick

宽窄砖

Wide and narrow bricks

专注金属雕花板生产与研发



DKZ-0008乳黄宽窄砖

DKZ-0008 milk yellow wide narrow brick



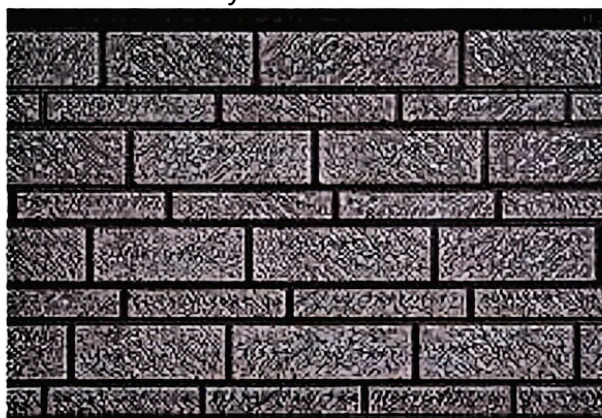
DKZ-0010沙漠黄宽窄砖

DKZ-0010 desert yellow wide narrow brick



DKZ-0011微紫黄宽窄砖

DKZ-0011 purple yellow wide narrow brick



DKZG-QB浅棕砂辊纯白宽窄砖

DKZG-QB light brown sand roller pure white wide and narrow brick



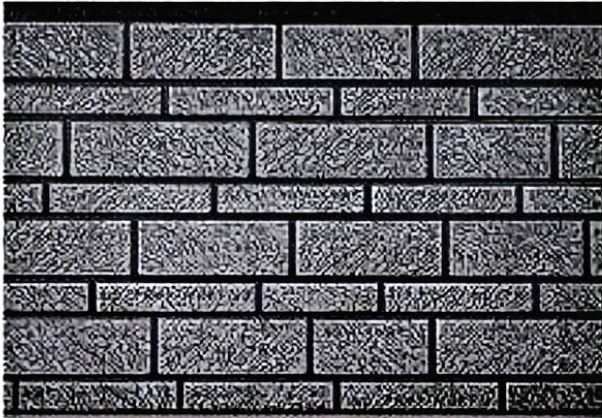
DKZG-QH浅棕砂辊灰白宽窄砖

DKZG-QH light brown sand roller gray white wide and narrow brick



DKZG-QJ浅米黄辊桔红宽窄砖

DKZG-QJ light beige roller orange red wide and narrow brick



DKZG-SB深灰辊纯白宽窄砖

DKZG-SB deep gray roller pure white wide and narrow brick



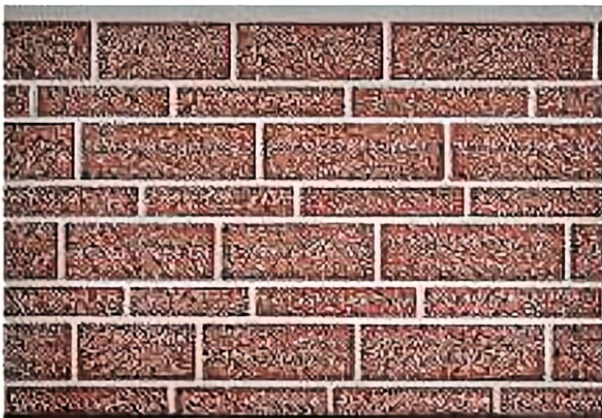
DKZG-SH深灰辊灰白宽窄砖

DKZG-SH deep gray roller gray white wide and narrow brick



DKZG-TG天使白辊古墙灰宽窄砖

DKZG-TG angel white roller ancient wall gray wide and narrow brick



DKZG-TH天使白辊网纹红宽窄砖

DKZG-TH Angel White Roller Reticulated Red Wide and Narrow Brick



DKZG-TW天使白辊瓦红宽窄砖

DKZG-TW Angel White Roller Tile Red Wide and Narrow Brick



DMS-0001天使白马赛克

DMS-0001 Angel White Mosaic



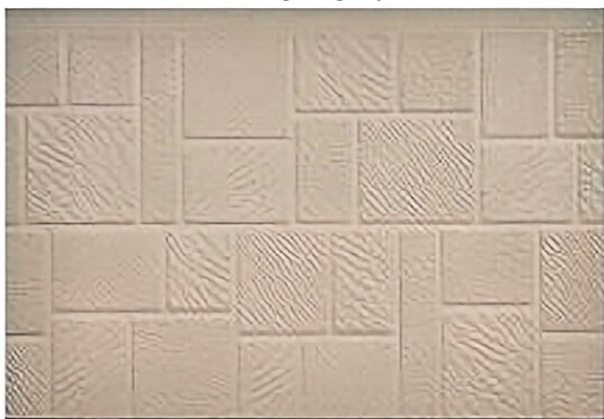
DMS-0005浅灰马赛克
DMS-0005 light gray mosaic



DMS-0010沙漠黄马赛克
DMS-0010 desert yellow mosaic



DMS-0011微紫黄马赛克
DMS-0011 purple yellow mosaic



DMS-0012浅米黄马赛克
DMS-0012 Light Beige Mosaic



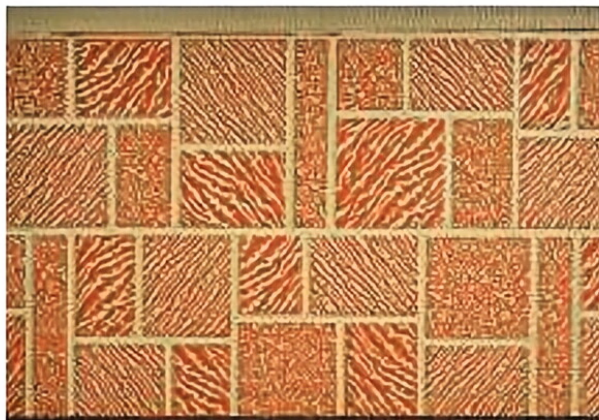
DMS-0017砖红马赛克
DMS-0017 Brick Red Mosaic



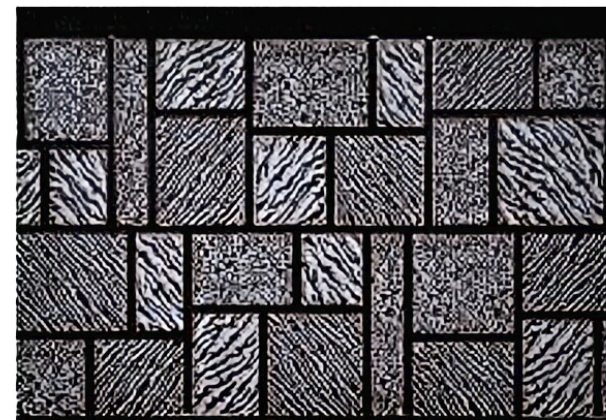
DMS-0025浅棕砂马赛克
DMS-0025 Light Brown Sand Mosaic



DMS-0032闪银马赛克
DMS-0032 Flash Silver Mosaic



DMSG-MW米黄辊瓦红马赛克
DMSG-MW Beige Roller Tile Red Mosaic



DMSG-QB浅棕砂辊纯白马赛克
DMSG-QB Light Brown Sand Roller Pure White Mosaic



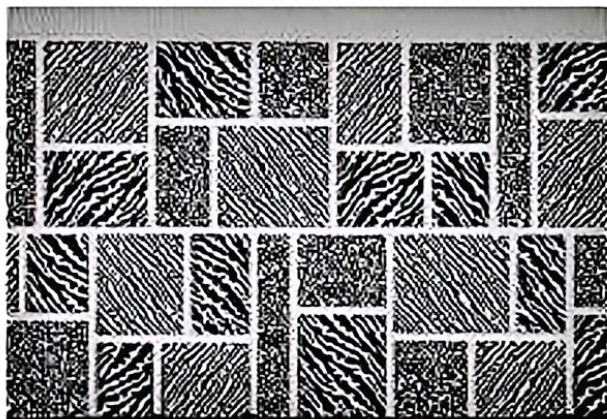
DMSG-QH浅棕砂辊灰白马赛克
DMSG-QH light brown sand roller gray mosaic



DMSG-QJ浅棕砂辊桔红马赛克
DMSG-QJ light brown sand roller orange mosaic



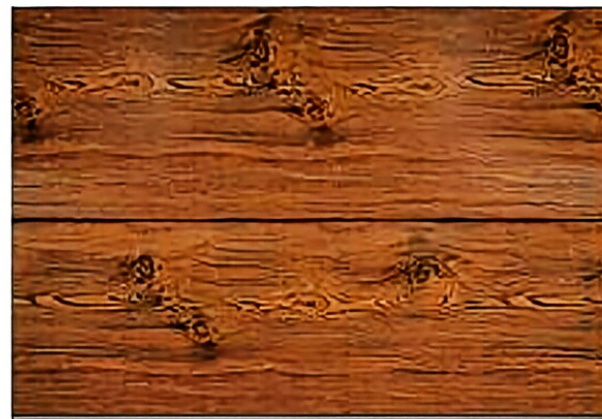
DMSG-QW浅棕砂辊瓦红马赛克
DMSG-QW light brown sand roller tile red mosaic



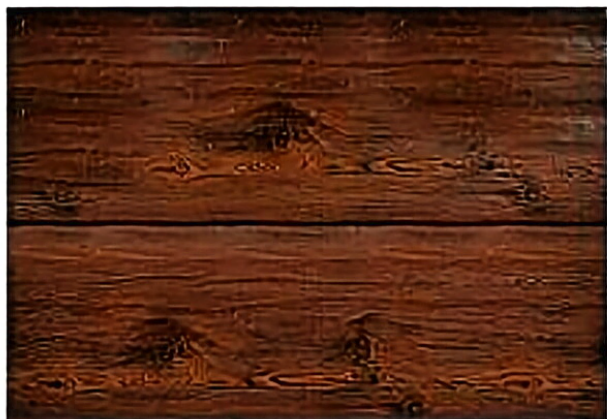
DMSG-TG天使白辊古墙灰马赛克
DMSG-TG Angel White Roller Ancient Wall Grey Mosaic



DMSG-TW天使白辊瓦红马赛克
DMSG-TW Angel White Roller Tile Red Mosaic



DMSX-1044浅鸡翅木水波纹斜沟
DMSX-1044 Light Chicken Wings Wood Water Ripple Slant



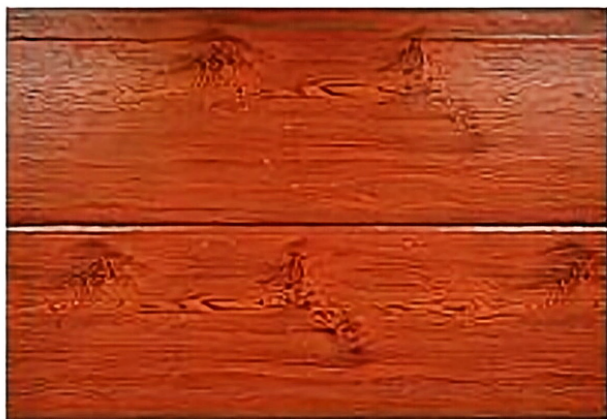
DMSX-1045深鸡翅木水波纹斜沟
DMSX-1045 deep chicken wing wood water ripple inclined groove



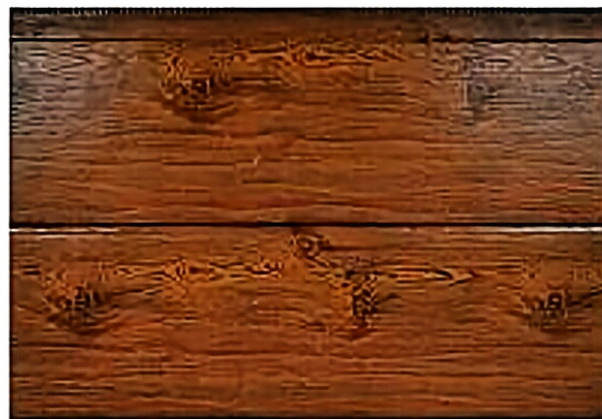
DMSX-1047黄松木水波纹斜沟
DMSX-1047 yellow pine wood water ripple inclined groove



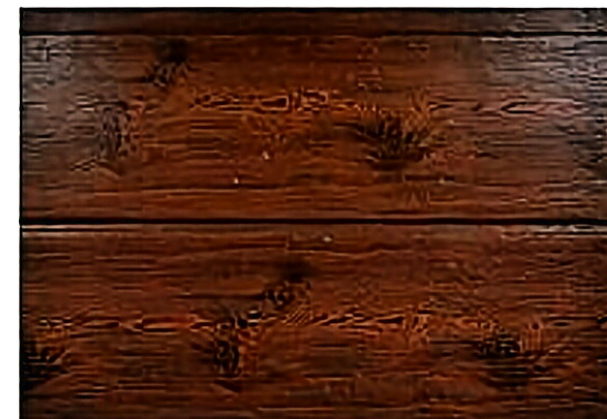
DMSX-2044浅鸡翅木水波纹双斜沟
DMSX-2044 shallow chicken wing wood water ripple double inclined groove



DMSZ-1043黄鸡翅木水波纹中沟
DMSZ-1043 yellow chicken wing wood water ripple middle groove



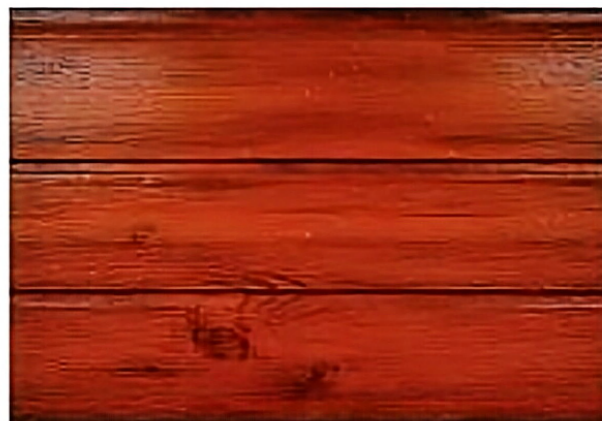
DMSZ-1044浅鸡翅木水波纹中沟
DMSZ-1044 shallow chicken wing wood water ripple middle groove



DMSZ-1045深鸡翅木水波纹中沟
DMSZ-1045 deep chicken wing wood water ripple middle groove



DMSZ-1047黄松木水波纹中沟
DMSZ-1047 yellow pine water ripple middle groove



DMSZ-2047黄松木水波纹双中沟
DMSZ-2047 yellow pine water ripple double middle groove



DMTX-1043黄鸡翅木弹涂纹斜沟
DMTX-1043 yellow chicken wing wood elastic coated diagonal groove



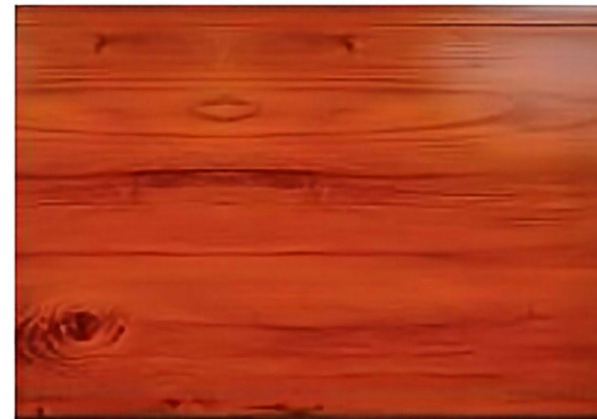
DMW-0044浅鸡翅木平板

DMW-0044 Shallow Winged Wooden Slab



DMW-0045深鸡翅木平板

DMW-0045 Deep Winged Wooden Slab



DMW-0047黄松木平板

DMW-0047 Yellow Pine Slab



DMW-0048砂面木纹平板

DMW-0048 Sand Surface Wood Grain Slab



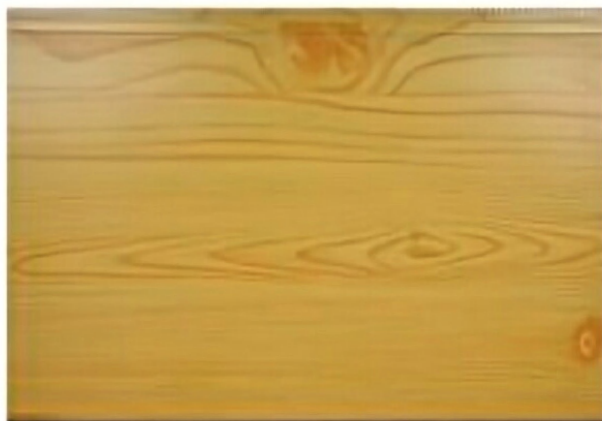
DMTZ-1046松木纹弹涂纹中沟

DMTZ-1046 Pine Wood Grain Spine Coated Middle Groove



DMW-0043黄鸡翅木平板

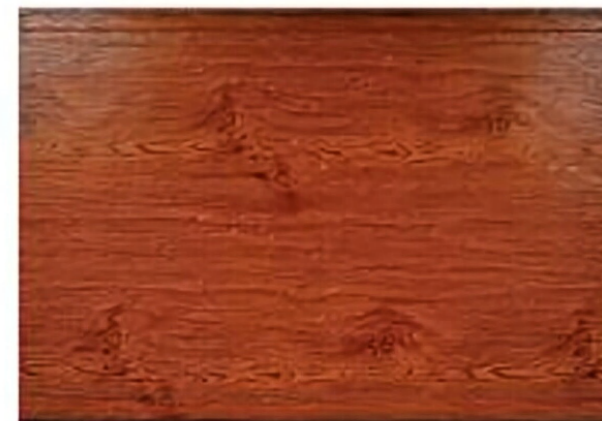
DMW-0043 Yellow Chicken Wings Wood Slab



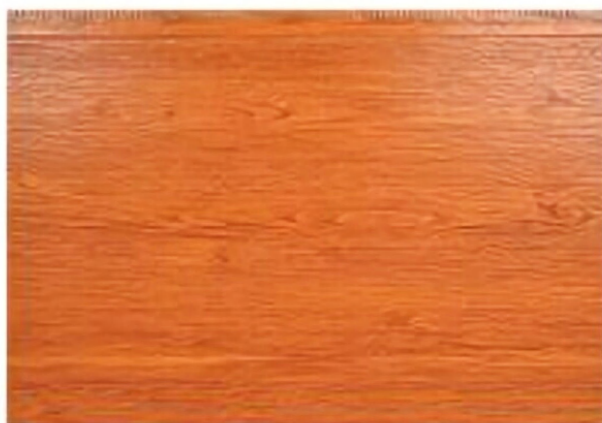
DMW-0049大山木纹平板
DMW-0049 Dashan Wood Grain Slab



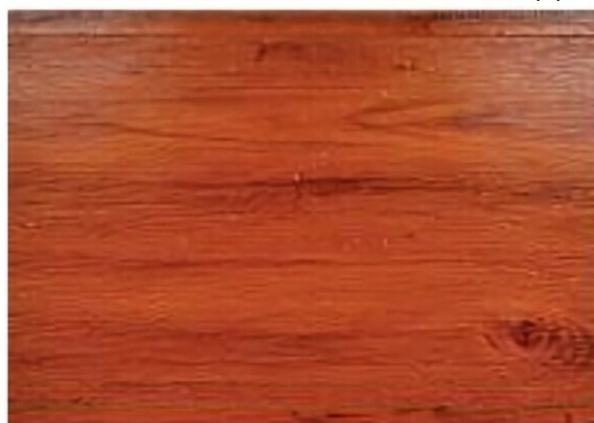
DMW-0049大山木纹平板-(2)
DMW-0049 Dashan Wood Grain Slab-(2)



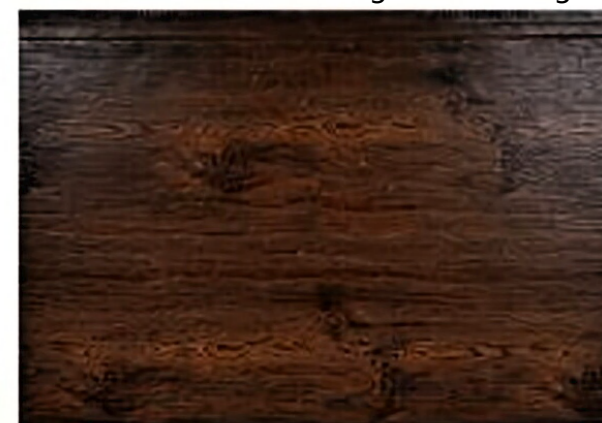
DMWS-0043黄鸡翅木水波纹平板
DMWS-0043 Yellow Chicken Wings Water Corrugated Slab



DMWS-0046松木纹水波纹平板
DMWS-0046 Pine Wood Grain Water Corrugated Slab



DMWS-0047黄松木水波纹平板
DMWS-0047 Yellow Pine Wood Water Corrugated Slab

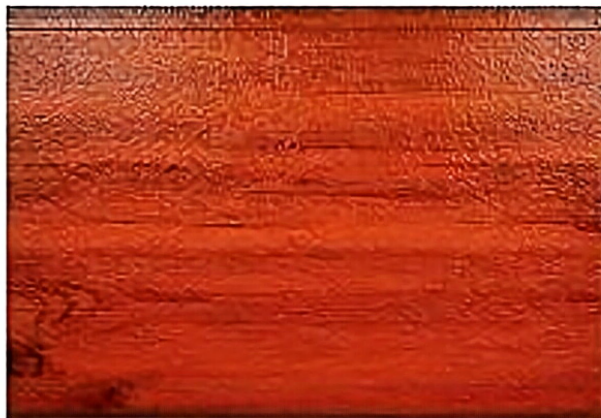


DMWS-1045深鸡翅木水波纹平板
DMWS-1045 Deep Chicken Wings Wood Water Corrugated Slab



DMWT-0043黄鸡翅木弹涂平板

DMWT-0043 yellow chicken wing wood elastic-coated plate



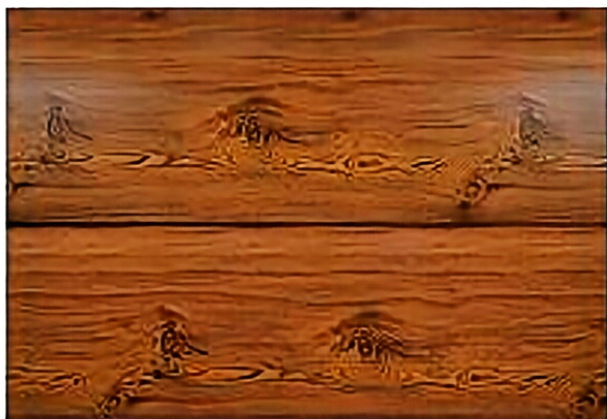
DMWT-0047黄松木弹涂纹平板

DMWT-0047 yellow pine elastic-coated plate



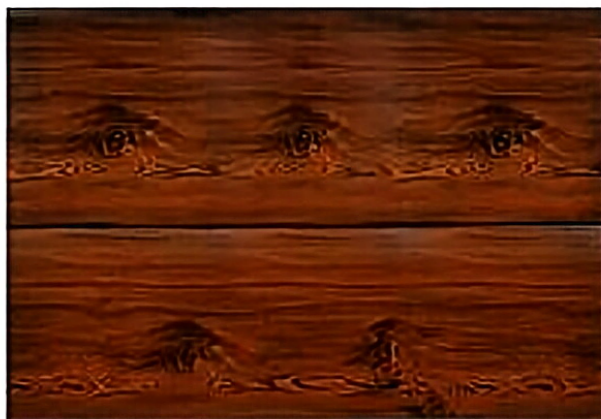
DMWX-1043黄鸡翅木平板斜沟

DMWX-1043 yellow chicken wing wood plate inclined groove



DMWX-1044浅鸡翅木平板斜沟

DMWX-1044 shallow chicken wing wood slab inclined ditch



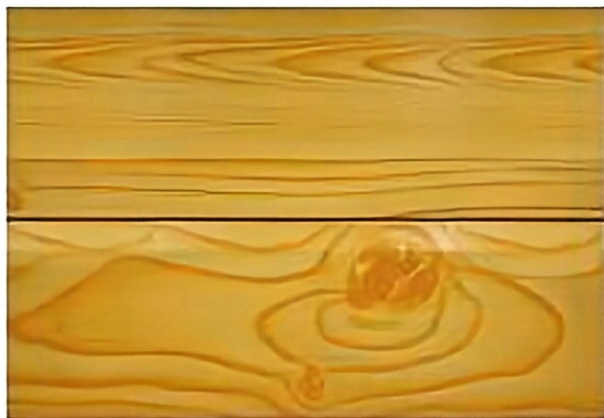
DMWX-1045深鸡翅木平板斜沟

DMWX-1045 deep chicken wing wood slab inclined ditch



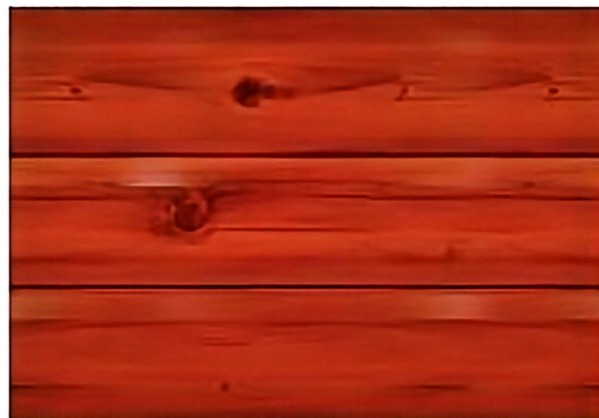
DMWX-1047黄松木平板斜沟

DMWX-1047 yellow pine slab inclined ditch



DMWX-1049大山木纹平板斜沟

DMWX-1049 Dashan wood grain plate inclined ditch



DMWX-2047黄松木平板双斜沟

DMWX-2047 yellow pine wood plate double inclined ditch



DMWX-2049大山木纹平板双斜沟

DMWX-2049 Dashan wood grain plate double inclined ditch



DMWX-3044浅鸡翅木平板三斜沟

DMWX-3044 shallow chicken wing wood flat plate three inclined groove



DMWX-3047黄松木平板三斜沟

DMWX-3047 yellow pine flat plate three inclined groove



DMWZ-0043黄鸡翅木标砖

DMWZ-0043 yellow chicken wing wood standard brick

木纹

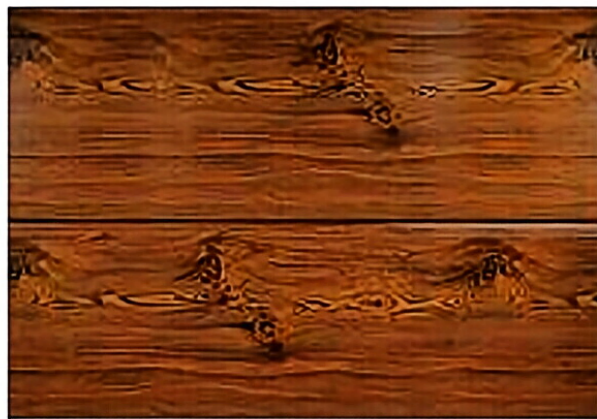
Wood grain

专注金属雕花板生产与研发



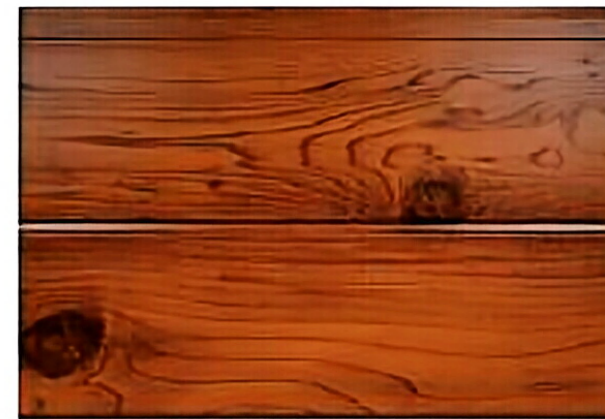
DMWZ-1043黄鸡翅木平板中沟

DMWZ-1043 Yellow Chicken Wings Plate Middle Groove



DMWZ-1044浅鸡翅木平板中沟

DMWZ-1044 Shallow Chicken Wings Plate Middle Groove



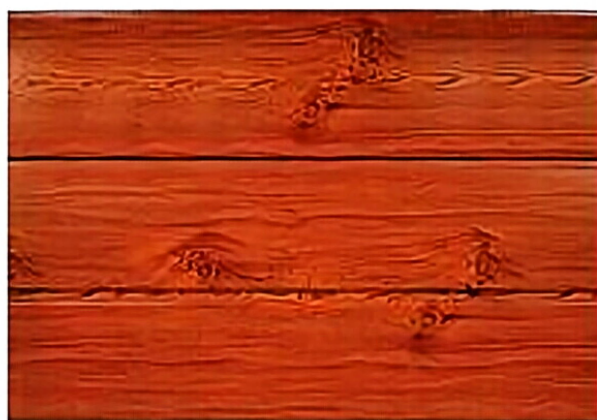
DMWZ-1048砂面木纹平板中沟

DMWZ-1048 Sand Surface Wood Grain Plate Middle Groove



DMWZ-1049大山木纹平板中沟

DMWZ-1049 Dashan Wood Grain Plate Middle Gully



DMWZ-2043黄鸡翅木平板双中沟

DMWZ-2043 Yellow Chicken Wings Plate Double Middle Gully

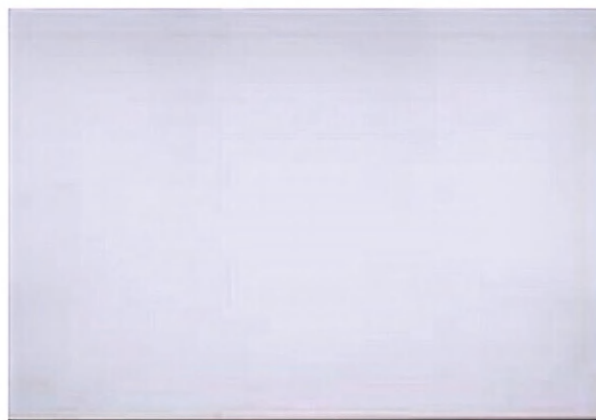


DMWZ-2047黄松木平板双中沟

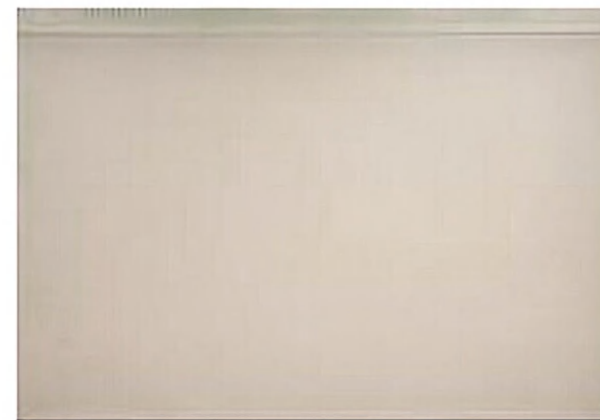
DMWZ-2047 Yellow Pine Plate Double Middle Gully



DPM-0001天使白平板
DPM-0001 Angel White Tablet



DPM-0002亮白平板
DPM-0002 Bright White Tablet



DPM-0003乳白平板
DPM-0003 Milk White Tablet



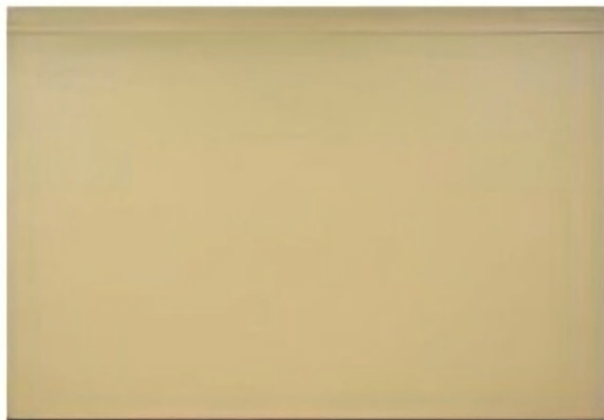
DPM-0004古墙灰平板
DPM-0004 ancient wall gray slab



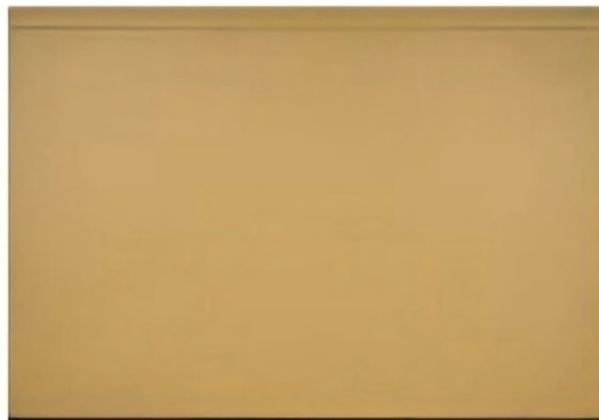
DPM-0005浅灰平板
DPM-0005 light gray slab



DPM-0008乳黄平板
DPM-0008 milky yellow slab



DPM-0009米黄平板
DPM-0009 beige plate



DPM-0010沙漠黄平板
DPM-0010 desert yellow plate



DPM-0016亮红平板
DPM-0016 bright red plate



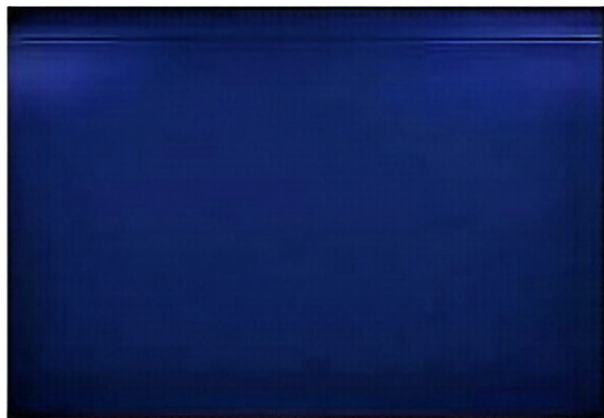
DPM-0017砖红平板
DPM-0017 brick red slab



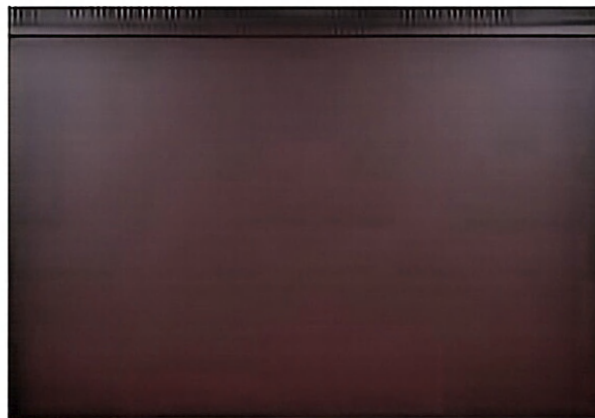
DPM-0019红橙平板
DPM-0019 red orange slab



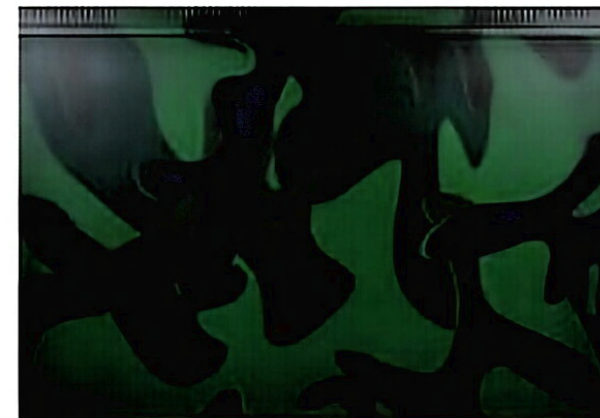
DPM-0021苹果绿平板
DPM-0021 apple green slab



DPM-0023警蓝平板
DPM-0023 Alarm Blue Plate



DPM-0025浅棕砂平板
DPM-0025 Light Brown Sand Plate



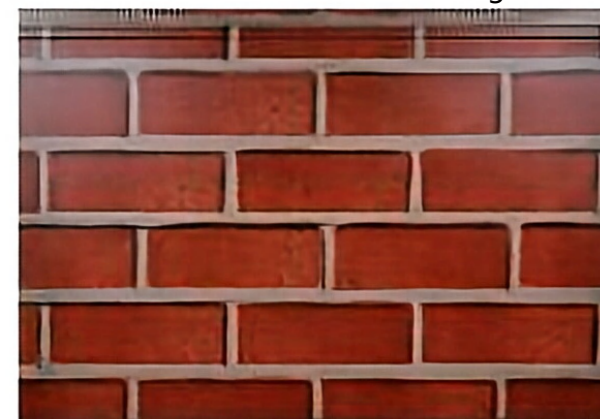
DPM-0027三色迷彩平板
DPM-0027 Three-color Camouflage Plate



DPM-0028空军迷彩平板
DPM-0028 Air Force Camouflage Flat



DPM-0029三色混彩平板
DPM-0029 Three-color Mixed Color Flat



DPM-0030双色红砖平板
DPM-0030 Two-color Red Brick Flat



DPM-0031 双色青砖平板

DPM-0031 two-color blue brick plate



DPMX-1011 微紫黄平板斜沟

DPMX-1011 slightly purple yellow plate inclined ditch



DPMZ-1001 天使白平板中沟

DPMZ-1001 angel white plate middle ditch



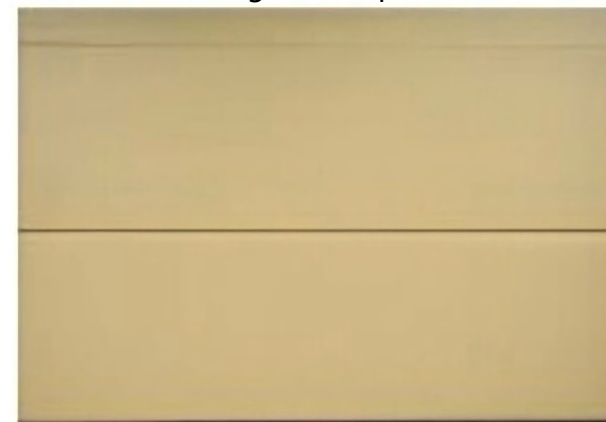
DPMZ-1002 亮白平板中沟

DPMZ-1002 bright white plate midfurrow



DPMZ-1005 浅灰平板中沟

DPMZ-1005 light gray plate midfurrow



DPMZ-1009 米黄平板中沟

DPMZ-1009 beige plate midfurrow



DPMZ-1010沙漠黄平板中沟
DPMZ-1010 Desert Yellow Plate Middle Gully



DPMZ-1011微紫黄平板中沟
DPMZ-1011 Violet Yellow Plate Middle Gully



DPMZ-1022深绿平板中沟
DPMZ-1022 Dark Green Plate Middle Gully



DPMZ-1025浅棕砂平板中沟
DPMZ-1025 light brown sand slab middle ditch



DPMZ-2019红橙平板双斜沟
DPMZ-2019 red orange slab double inclined ditch



DSZ-0001天使白方砖
DSZ-0001 angel white square brick

方砖

Square tile

专注金属雕花板生产与研发



DSZ-0004古墙灰方砖

DSZ-0004 ancient wall gray square brick



DSZ-0005浅灰方砖

DSZ-0005 light gray square brick



DSZ-0010沙漠黄方砖

DSZ-0010 desert yellow square brick



DSZ-0011微紫黄方砖

DSZ-0011 micro purple yellow square brick



DSZ-0025浅棕砂方砖

DSZ-0025 light brown sand square brick

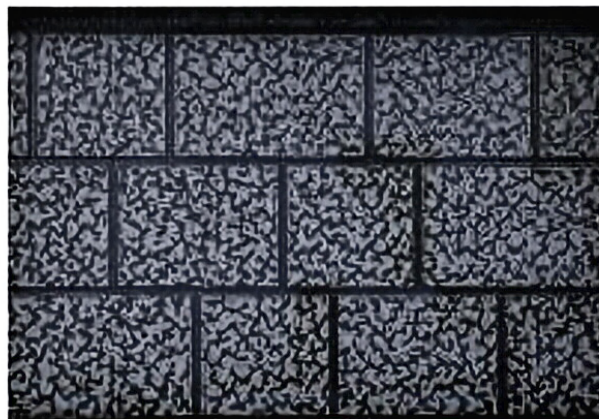


DSZG-GB古墙灰辊纯白方砖

DSZG-GB ancient wall gray roller pure white square brick



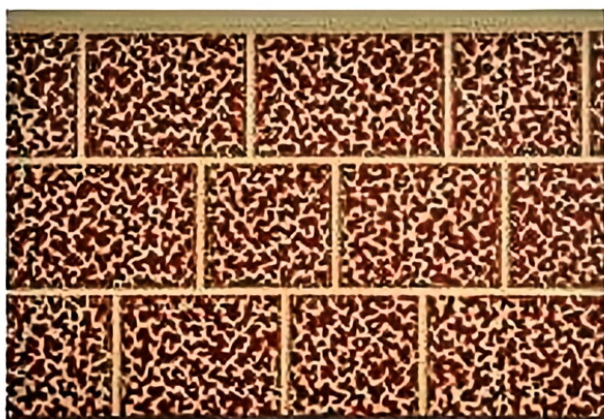
DSZG-QG浅米黄辊古墙灰方砖
DSZG-QG light beige roller ancient wall gray square brick



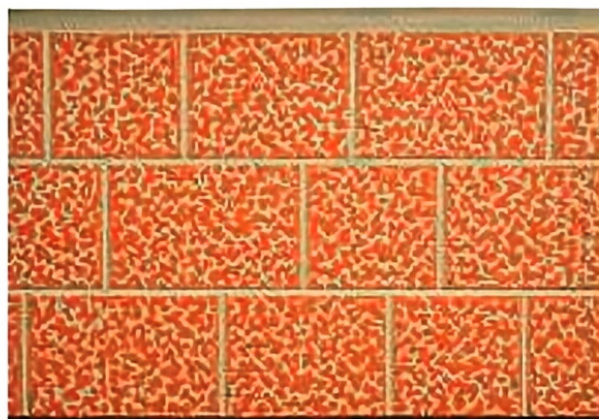
DSZG-GH古墙灰辊灰白方砖
DSZG-GH ancient wall gray roller gray white square brick



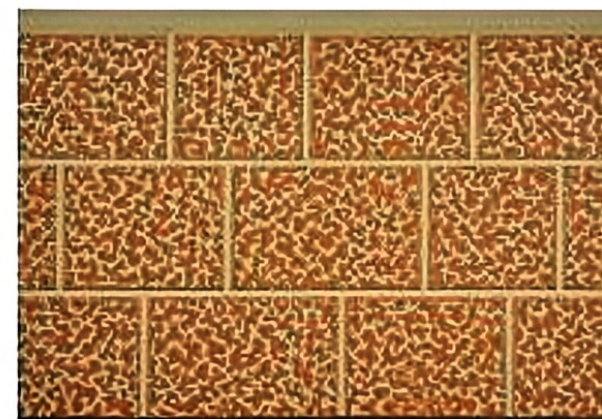
DSZG-GT古墙灰辊土黄方砖
DSZG-GT ancient wall gray roller earth yellow square brick



DSZG-GW米黄辊网纹红方砖
DSZG-GW beige roller reticulated red square brick



DSZG-MJ米黄辊桔红方砖
DSZG-MJ beige roller orange square brick



DSZG-MT米黄辊土黄方砖
DSZG-MT beige roller earthy yellow square brick



DSZG-QJ浅灰辊桔红方砖

DSZG-QJ light gray roller orange square brick



DSZG-SB深灰辊纯白方砖

DSZG-SB dark gray roller pure white square brick



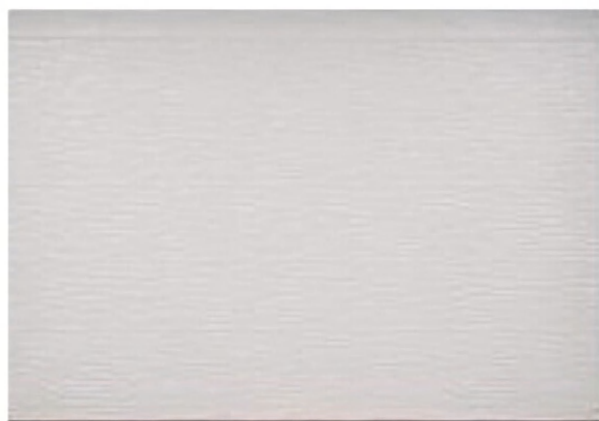
DSZG-SH深灰辊灰白方砖

DSZG-SH dark gray roller gray square brick



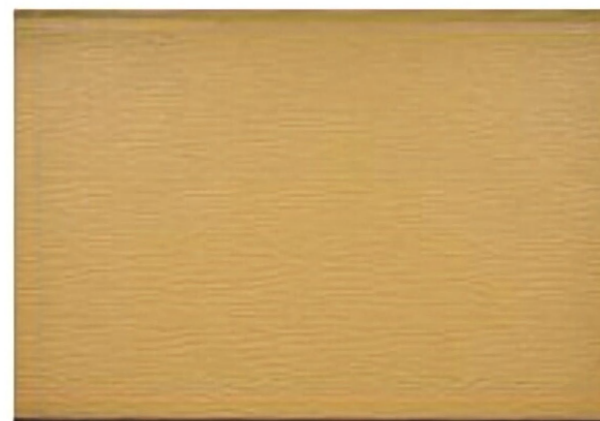
DSZG-WW微紫黄辊瓦红方砖

DSZG-WW Slight Purple Yellow Roller Tile Red Square Brick



DSB-0001天使白水波纹平板

DSB-0001 Angel White Water Corrugated Flat Plate



DSB-0010沙漠黄水波纹平板

DSB-0010 Desert Yellow Water Corrugated Flat Plate



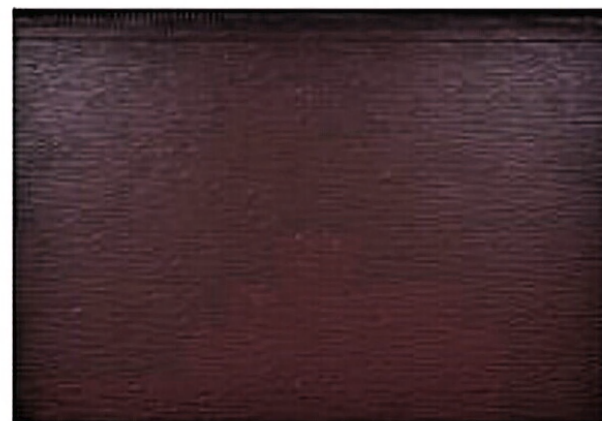
DSB-0011微紫黄水波纹平板

DSB-0011 purple yellow water corrugated plate



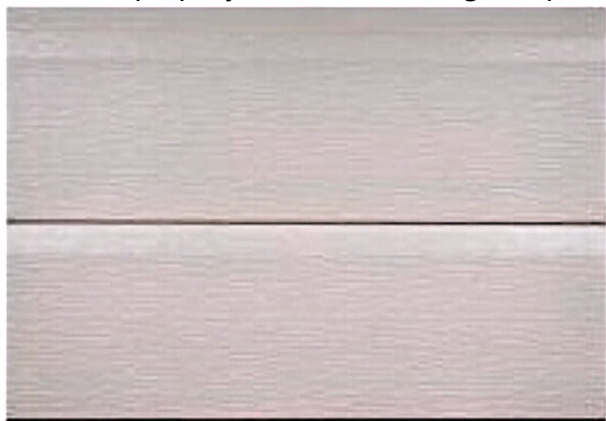
DSB-0017砖红水波纹中沟

DSB-0017 brick red water corrugated middle ditch



DSB-0025浅棕砂水波纹平板

DSB-0025 light brown sand water corrugated plate



DSBX-1001天使白水波纹斜沟

DSBX-1001 angel white water ripple inclined ditch



DSBX-1004古墙灰水波纹斜沟

DSBX-1004 ancient wall gray water ripple inclined ditch



DSBX-1010沙漠黄水波纹斜沟

DSBX-1010 desert yellow water ripple inclined ditch

水波纹

Water ripple

专注金属雕花板生产与研发



DSBX-1011微紫黄水波纹斜沟

DSBX-1011 purple yellow water ripple inclined groove



DSBZ-1001天使白水波纹中沟

DSBZ-1001 Angel White Water Ripple Middle Trench



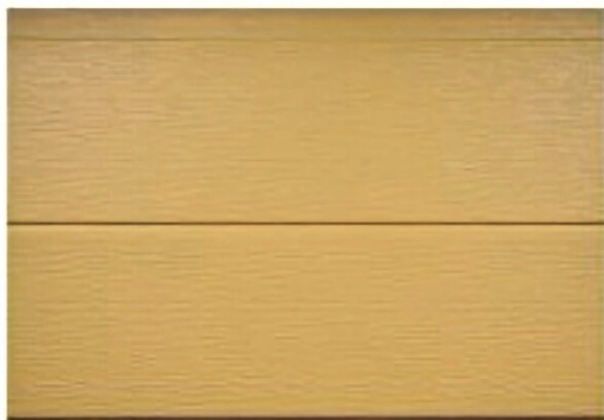
DSBZ-1005浅灰水波纹中沟

DSBZ-1005 light gray water ripple middle ditch



DSBZ-1009米黄水波纹中沟

DSBZ-1009 beige water ripple middle ditch



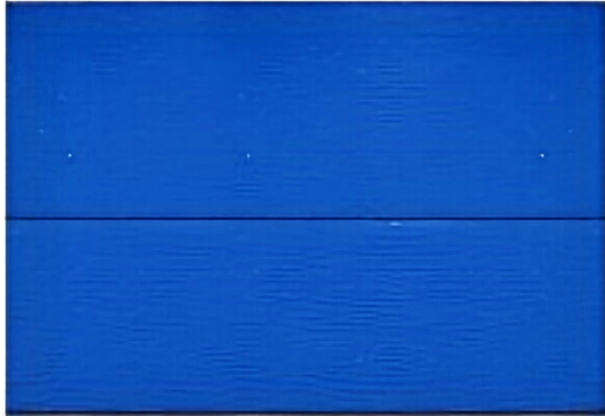
DSBZ-1010沙漠黄水波纹中沟

DSBZ-1010 Desert Yellow Water Ripple Middle Trench



DSBZ-1011微紫黄水波纹中沟

DSBZ-1011 purplish yellow water ripple middle groove



DSBZ-1024天蓝水波纹中沟
DSBZ-1024 Sky Blue Water Ripple Middle Gully



DSBZ-1026深咖水波纹中沟
DSBZ-1026 Deep Coffee Water Ripple Middle Gully



DTW-0001天使白条纹
DTW-0001 Angel White Stripe



DTW-0009米黄条纹
DTW-0009 beige stripe



DTW-0024天蓝条纹
DTW-0024 sky blue stripe



DWL-0001天使白瓦楞纹
DWL-0001 angel white corrugated pattern

瓦楞纹

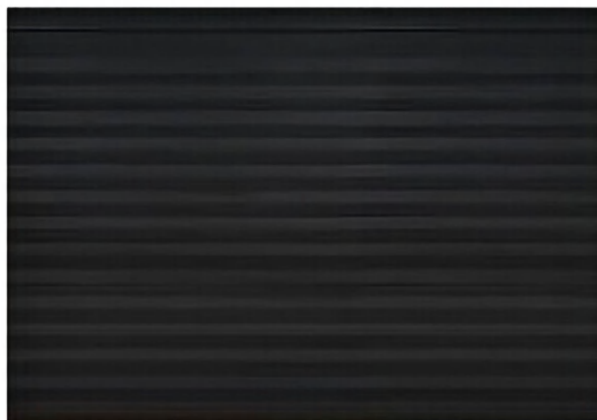
Corrugated pattern

专注金属雕花板生产与研发



DWL-0002亮白瓦楞纹

DWL-0002 bright white corrugated



DWL-0006深灰瓦楞纹

DWL-0006 dark gray corrugated



DWL-0008乳黄瓦楞纹

DWL-0008 milky yellow corrugated



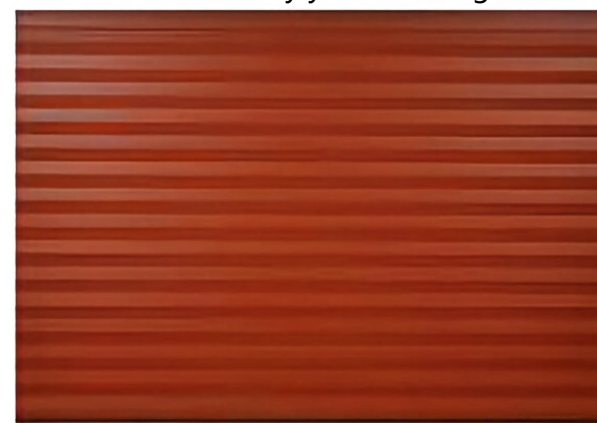
DWL-0009米黄瓦楞纹

DWL-0009 beige corrugated pattern



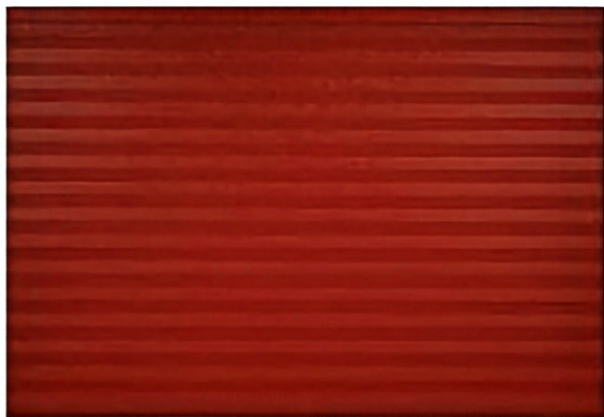
DWL-0014亮黄瓦楞纹

DWL-0014 bright yellow corrugated pattern



DWL-0017砖红瓦楞纹

DWL-0017 brick red corrugated pattern



DWL-0018网纹红瓦楞纹
DWL-0018 reticulated red corrugated



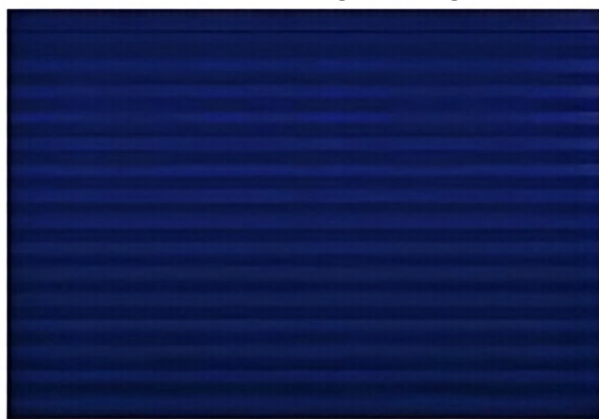
DWL-0019红橙瓦楞纹
DWL-0019 red orange corrugated



DWL-0020粉色瓦楞纹
DWL-0020 pink corrugated



DWL-0021苹果绿瓦楞纹
DWL-0021 Apple Green Corrugated



DWL-0023警蓝瓦楞纹
DWL-0023 Police Blue Corrugated



DWL-0025浅棕砂瓦楞纹
DWL-0025 Light Brown Sand Corrugated

橡木纹

Oak grain

专注金属雕花板生产与研发



DXM-0004古墙灰橡木纹

DXM-0004 ancient wall gray oak pattern



DXM-0009米黄橡木纹

DXM-0009 beige oak pattern



DXM-0012浅米黄橡木纹

DXM-0012 light beige oak pattern



DXM-0017砖红橡木纹

DXM-0017 brick red oak grain



DXM-0043黄鸡翅木橡木纹

DXM-0043 yellow chicken wings oak grain

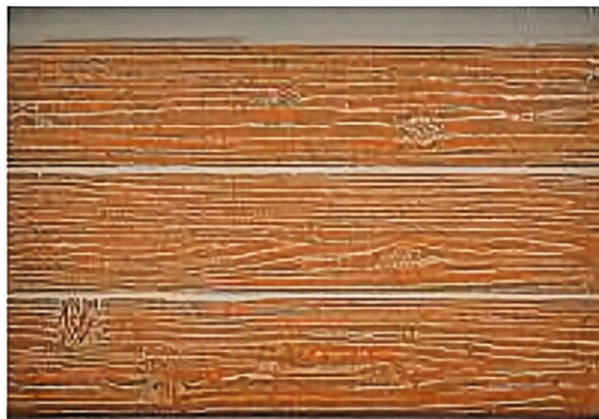


DXMG-MJ米黄辊桔红橡木纹

DXMG-MJ beige roll orange red oak grain



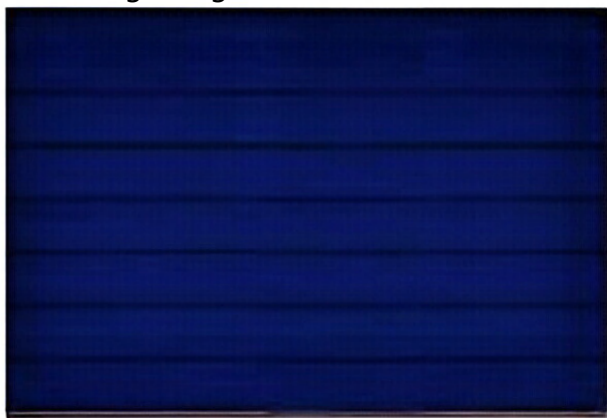
DXMG-QH 浅米黄辊网纹红橡木纹
DXMG-QH Light Beige Roller Web Grain Red Oak Grain



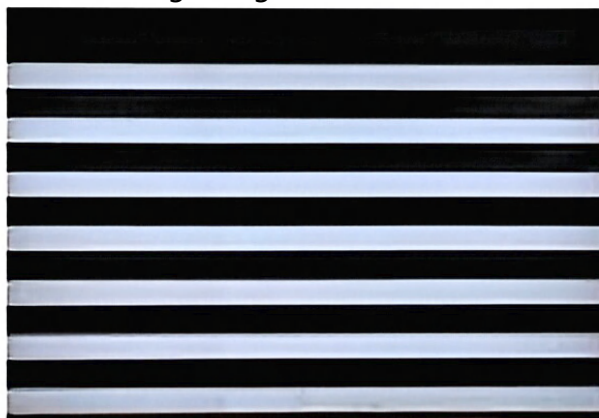
DXMG-QT 浅米黄辊土黄橡木纹
DXMG-QT Light Beige Roller Earth Yellow Oak Grain



DCC-0001 天使白长城板
DCC-0001 Angel White Great Wall Board



DCC-0023 警蓝长城板
DCC-0023 Police Blue Great Wall Board



DCCG-SB 深灰辊纯白长城板
DCCG-SB Dark Grey Roller Pure White Great Wall Board



DCCG-TG 天使白辊古墙灰长城板
DCCG-TG Angel White Roller Ancient Wall Grey Great Wall Board



DCT-0001
天使白长条石纹

DCT-0001 angel white striplite



DCT-0005
浅灰长条石

DCT-0005 light gray striplite



DCT-0012
浅米黄长条石

DCT-0012 beige long stone



DCT-0025
浅棕砂长条石

DCT-0025 light brown sand long stone



聚苯板1

Polystyrene board 1



聚苯板2

Polystyrene board 2



聚苯板3

Polystyrene board 3



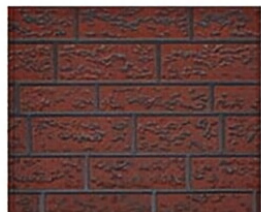
聚苯板4

Polystyrene board 4

Coarse Brick Pattern



CZ-001



CZ-002



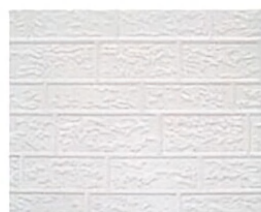
CZ-003



CZ-004



CZ-005



CZ-006



CZ-007



CZ-008



CZ-009



CZ-010



CZ-011



CZ-012

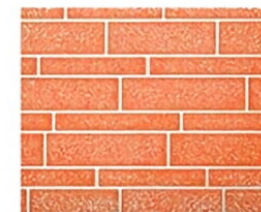
Wide and Narrow Brick Pattern



KZ-001



KZ-002



KZ-003



KZ-004



KZ-005



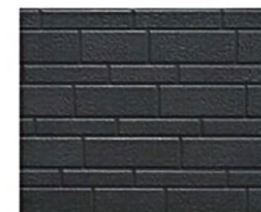
KZ-006



KZ-007



KZ-008



KZ-009



KZ-010

Standard Brick(Seven Brick)Pattern



BZ-001



BZ-002



BZ-003



BZ-004



BZ-005



BZ-006



BZ-007



BZ-008



BZ-009



BZ-010



BZ-011

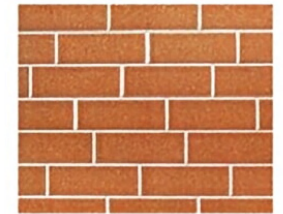
Standard Brick(Seven Brick)Pattern



BZ-012



BZ-013



BZ-014



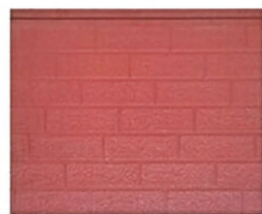
BZ-015



BZ-016



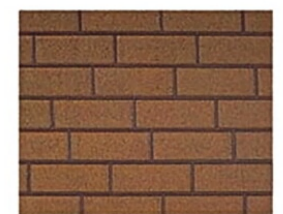
BZ-017



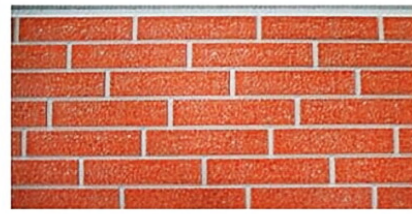
BZ-018



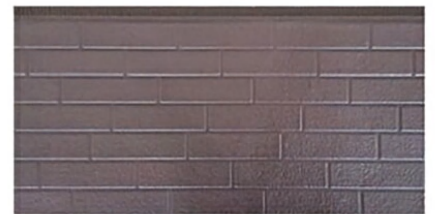
BZ-019



BZ-020

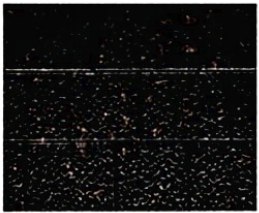


BZ-021



BZ-022

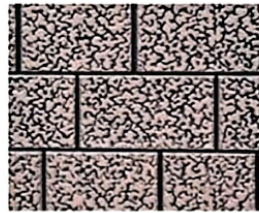
Three Brick Pattern



ST-001



ST-002



ST-003



ST-004



ST-005



ST-006



ST-007



ST-008



ST-009



ST-010



ST-011



ST-012

Elastic Coating Pattern



TT-001



TT-002



TT-003



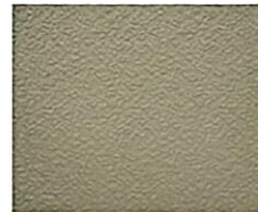
TT-004



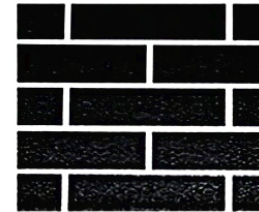
TT-005



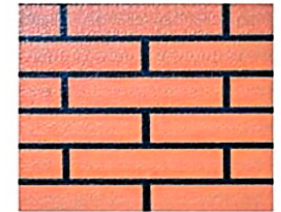
TT-006



TT-007



TT-008



TT-009

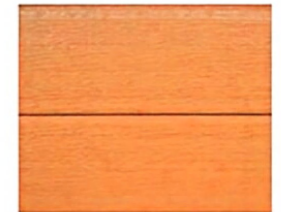
Water ripple pattern (bark pattern)



SP-001



SP-002



SP-003

Wood Grain Pattern



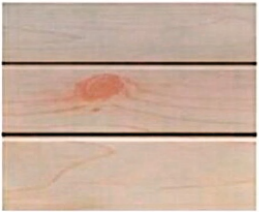
SPM-001



SPM-002



SPM-003



SPM-004



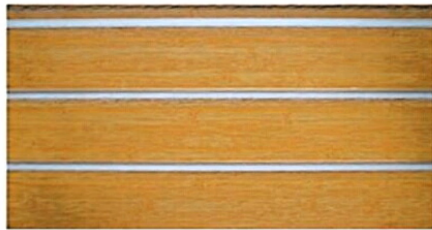
SPM-005



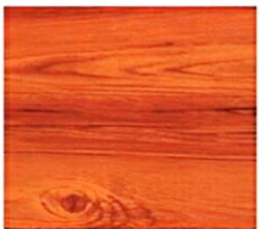
SPM-006



SPM-007



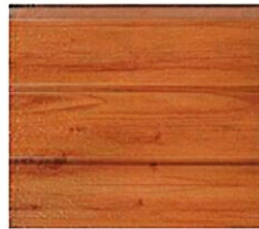
SPM-008



SPM-009



SPM-010



SPM-011

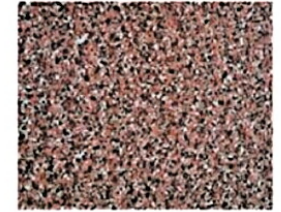
Marble Pattern



DLS-001



DLS-002



DLS-003



DLS-004



DLS-005-3D



DLS-006



DLS-007



DLS-008



DLS-009



DLS-010



DLS-011



DLS-012

Flat Pattern



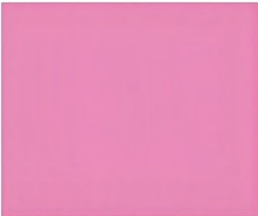
PM-001



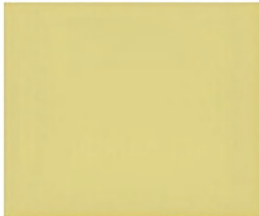
PM-002



PM-003



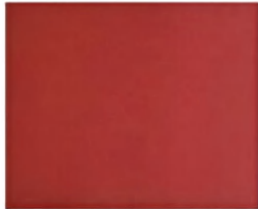
PM-004



PM-005



PM-006



PM-007



PM-008



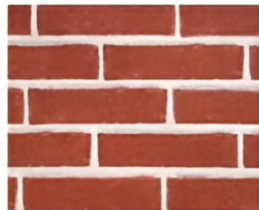
PM-009



PM-010



PM-011



PM-012

Corrugated Pattern



WL-001



WL-002



WL-003



WL-004



WL-005



WL-006



WL-007



WL-008



WL-009



WL-010



WL-011

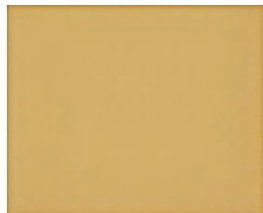


WL-012

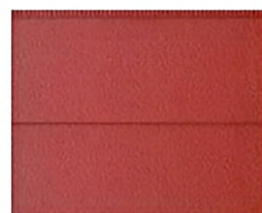
Groove Series



DXG-001



SXG-002



SXG-003



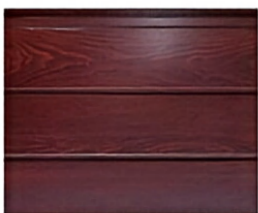
SXG-004



SZG-005



SXG-006



SZG-007



DZG-008



DZG-009



SXG-010



SXG-011



SXG-012

Great Wall Board Series



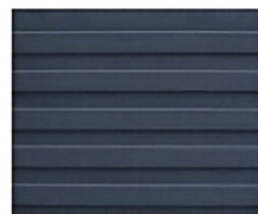
CCB-001



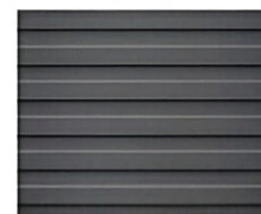
CCB-002



CCB-003



CCB-004



CCB-005



CCB-006



CCB-007



CCB-008

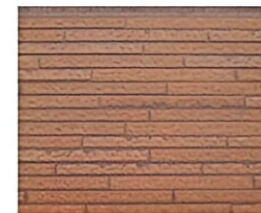


CCB-009

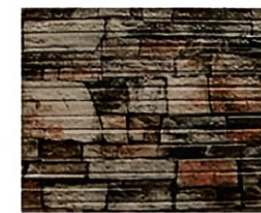
Flag Stone Series



CTS-001



CTS-002



CTS-003

Six Brick Pattern



LZ-001



LZ-002



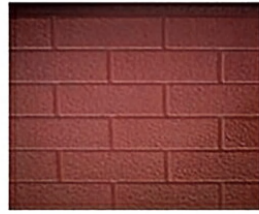
LZ-003



LZ-004



LZ-005



LZ-006



LZ-007



LZ-009



LZ-008



LZ-010

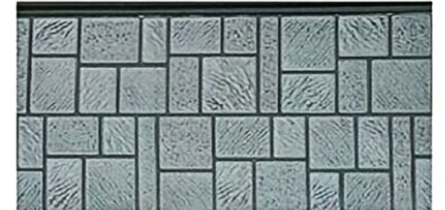
Mosaic Series



MSK-001



MSK-002



MSK-003

Flag Stone Series

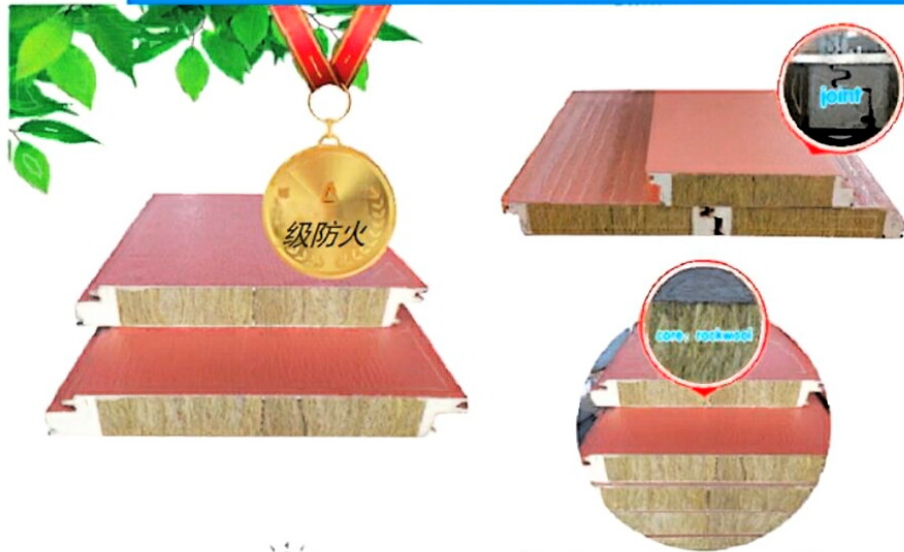


DSB-001



DSB-002

Fire-proof Rock Wool Sandwich Panel



Energy Saving Heat Insulation



Convenient Installation Cost Saving Earthquake Resistant Anti Crack



Flame Retardant Moisture Proof



Environmental Protection Durable



Perfect Decorative Effect Wide Usage

EPS Foam Sandwich Insulation Board



Thickness:3—10cm

Purification Panel



Purification panels, also known as dust-free panels, come in two types:

handmade purification panels and machine-made purification panels. They are widely used in clean engineering fields that demand high environmental cleanliness, such as hospitals, laboratories, pharmaceutical manufacturing, food processing, and aerospace. These panels offer unique properties, including dust-proofing, anti-static capabilities, and antibacterial effects. Purification panels exhibit excellent corrosion resistance and exceptional toughness, ensuring no damage from corrosive agents on walls. Their inherent antibacterial properties significantly reduce the frequency and intensity of sterilization operations. Thanks to these features, purification panels have become an essential building material across various industries requiring stringent hygiene standards.

Purification Panel



抗冲击性强
Bending strength & impact resistance



防水性好
Excellent water resistance



耐酸碱腐蚀
Acid & alkali & chemical corrosion resistance



承载力好
High load-bearing capacity



抗菌性能优异
Superior antibacterial efficacy



隔音隔热
Sound absorption & thermal insulation

KEY ADVANTAGES OF THE PANELS

Easy Maintenance: Smooth Surface & High Waterproof Performance. The panels non-porous, smooth surface minimizes dust absorption, simplifying long-term maintenance. Cleaning requires only a damp cloth without specialized tools.

Exceptional Durability: High-Temperature & High-Pressure Processing. Treated with advanced surface technology, the panels feature high hardness and impact resistance, resisting scratches and deformation even under mechanical stress. Demonstrates superior bending resistance, maintaining structural integrity under external forces.

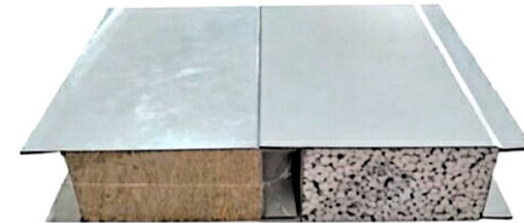
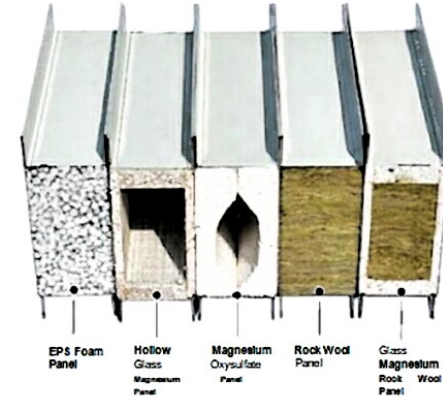
Moisture & Mold Resistance: Repels water droplets effectively, preventing moisture absorption and eliminating risks of mold growth or swelling. Inhibits bacterial proliferation, ensuring hygiene even in high-humidity environments like rainy seasons.

Long Service Life: Resistant to fading, discoloration, and physical degradation, maintaining performance over extended periods. No yellowing, cracking, or structural failure observed under prolonged use.

APPLICATION FIELDS



Machine-made Purification Panel

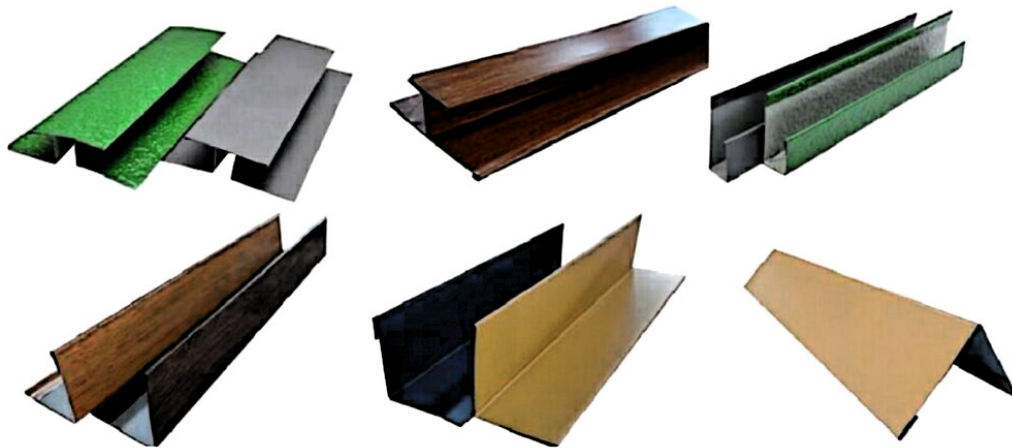


Machine-made Purification Panel	
Surface/back material	Color-coated steel plate / Clean steel plate \
Sandwich material	Rock wool/Foam/TPS board/Magnesium sulfate board/Hollow magnesia
advantage	Diverse fire performance/Easy installation/Long service life
Weight	Foam core: 9 kg, Rock wool core: 11 kg
Length	Customizable
Width	1150mm
Thickness	50-75-100mm

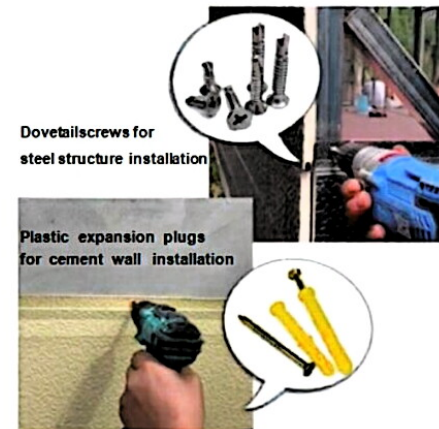
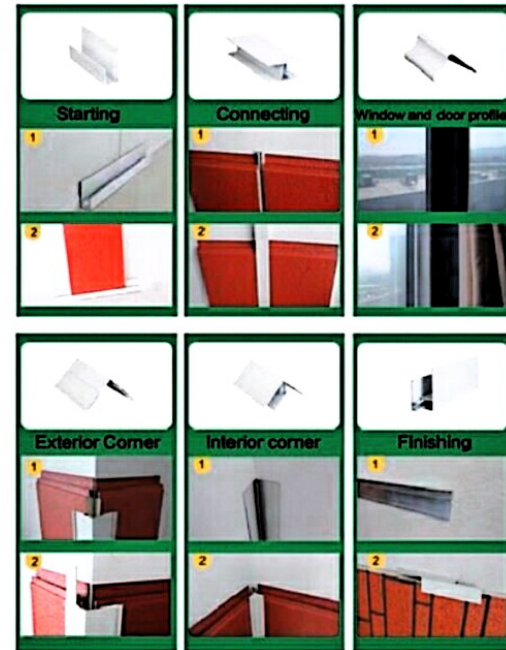
INSTALLATION ACCESSORIES



ACCESSORIES OF THE SAME MATERIAL (COLOR OPTIONAL)



ACCESSORIES INSTALLATION OF EXTERNAL WALL PANEL





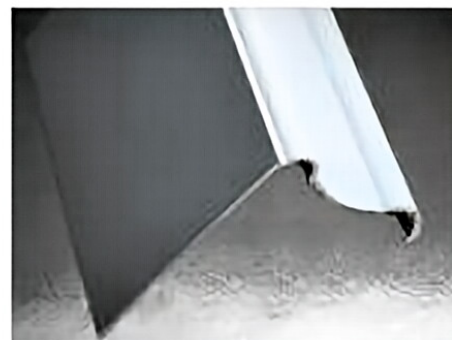
DBR-L002中缝条

DBR-L002 Middle seam fittings



DBR-L003收口件

DBR-L003
Install accessories at the end



DBR-L004门窗包

DBR-L004
Door and window wrapped fittings



DBR-L005阴阳角

DBR-L005 Inside
and outside corner accessories



DBR-L006大包角

DBR-L006 Big corner accessories



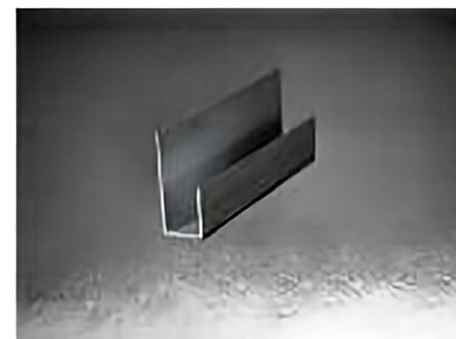
DBR-L008隐形起步件

DBR-L008
Invisible Initial installation accessories



DBR-L007大阴阳角

DBR-L007 Big Inside
and outside corner accessories



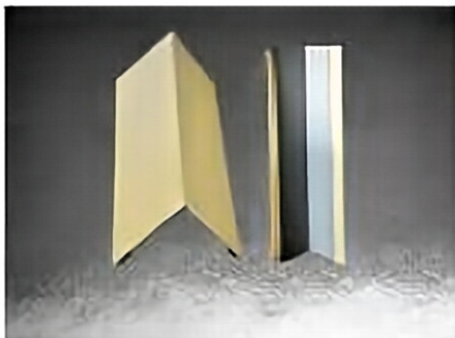
DBR-L001起步件

DBR-L001
Initial installation accessories

同材质配件

The accessories same as wall panel material

专注金属雕花板生产与研发



同材质阳角

Same material outside corner



同色门窗包

Same color Door and window wrapped fittings



压花起步、收口件

Embossed initial and end installation accessories



同材质阴角

Same material inside corner



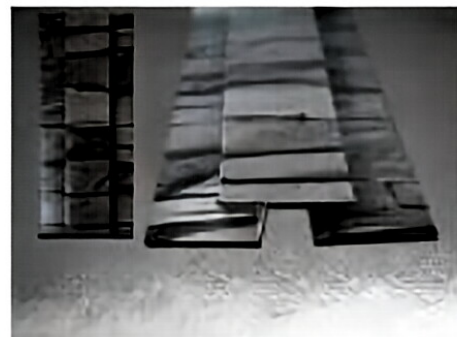
压花双色中缝

Embossed double colors Middle seam fittings



同材质起步、收口件

Same material Initial and end installation accessories



同材质中缝

Same material Middle seam fittings



双色阴、阳角

Double colors outside and inside corner accessories

同材质配件

The accessories same as wall panel material



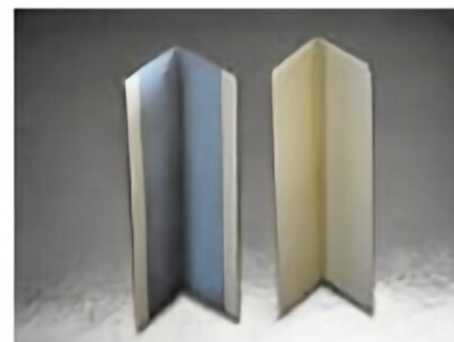
阴、阳角
Outside and
inside corner accessories



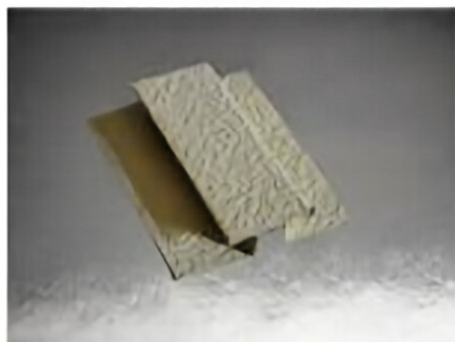
中缝
Median raphe



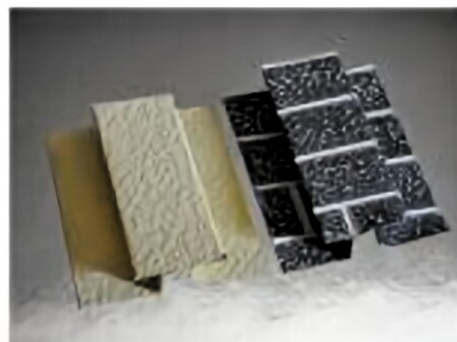
中缝条
Median seam



压花阴、阳角
Embossed outside and
inside corner accessories



压花中缝
Embossed Middle seam fittings



压花中缝(2)
Embossed Middle seam fittings (2)



压砖型中缝
Embossed brick type
Middle seam fittings



异型阴、阳角
Different shapes outside
and inside corner accessories



轻钢龙骨1
Light steel keel 1



轻钢龙骨2
Light steel keel 2



轻钢龙骨3
Light steel keel 3



轻钢龙骨4
Light steel keel 4



轻钢龙骨5
Light steel keel 5



轻钢龙骨6
Light steel keel 6



轻钢龙骨7
Light steel keel 7



轻钢龙骨8
Light steel keel 8



效果图1

Design sketch 1



效果图2

Design sketch 2



效果图3

Design sketch 3



效果图4

Design sketch 4



效果图5

Design sketch 5



效果图6

Design sketch 6



效果图7

Design sketch 7



效果图8

Design sketch 8



效果图9
Design sketch 9



效果图10
Design sketch 10



效果图11
Design sketch 11



效果图12
Design sketch 12



效果图13
Design sketch 13



效果图14
Design sketch 14

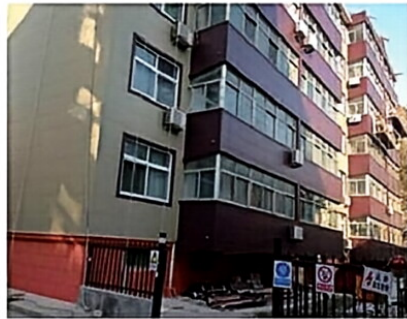


效果图15
Design sketch 15



效果图16
Design sketch 16

CONSTRUCTION CASES



CONSTRUCTION CASES

